

# Ex-signal and escape sign luminaire

dKLK 23 / dKLK 23 LED

**3** Plastic design for Zone 1 and 21

## Securing and signalling

These light fittings meet the requirements of ATEX-Directive 2014/34/EU for temperature class T6. They are certified for use in hazardous areas in Zones 1 and 2 with a temperature class up to T6, as well as for explosive dust atmospheres in Zones 21 and 22. What is more, they also meet the requirements in accordance with EN 60598, Part 2.22 for emergency lighting.

The Ex light fittings dKLK 23 are suited for compact fluorescent lamps with an integrated electronic ballast and outputs of 5-8 W. If a flash module is fitted in the housing (optional), the light

fitting can be used also as a strobe light.

The dKLK 23 LED version is supplied with a 6W LED lamp. This combines the innovative LED technology with main features, such as:

- Energy saving
- Environmentally friendly because mercury free
- Long service life
- Cost-saving due to long maintenance intervals
- Ideally suited for intermittent operation as flashing light

The housing is made of a fibre-glass reinforced polyester and

the protective globe of a transparent or coloured polycarbonate.

When fitted with coloured protective cover, they are also used as signal lights. In combination with the exit cubes, they are used as emergency lighting luminaires.

The luminaire is connected using a flameproof eXLink coupler plug or via a flameproof cable gland.

With the optional V-CG-S monitoring module with coding switch for max. 20 addresses, they can be connected as individually monitored emergency lighting luminaires to the CEAG emergency lighting supply system (dKLK 23 V-CG-S).



## Features

- Signal light fitting, also with coloured protective globe, for use in environments in temperature class T6
- For compact fluorescent lamps with integrated EVG
- Optionally, LED-lamp
- For ceiling and wall mounting
- High degree of protection IP66
- Connection to the CEAG emergency lighting supply systems with individual monitoring possible
- Optional flash module

## Ordering details



Type	Scope of delivery	Colour of protective cover	Order No.
dKLK 23/eXLink	1 x eXLink coupler 2-pol. + PE for cable Ø 7.5 - 11 mm	clear	<b>GHG 871 1001 R0001</b>
dKLK 23/eXLink	1 x eXLink coupler 2-pol. + PE for cable Ø 7.5 - 11 mm	red	<b>GHG 871 1101 R0001</b>
dKLK 23/eXLink	1 x eXLink coupler 2-pol. + PE for cable Ø 7.5 - 11 mm	green	<b>GHG 871 1201 R0001</b>
dKLK 23/eXLink	1 x eXLink coupler 2-pol. + PE for cable Ø 7.5 - 11 mm	blue	<b>GHG 871 1301 R0001</b>
dKLK 23 V-CG-S /eXLink <sup>1)</sup>	1 x eXLink coupler 2-pol. + PE for cable Ø 7.5 - 11 mm, with V-CG-S-module and address-switch	clear	<b>GHG 871 2001 R0001</b>



dKLK 23/Ex d	1 x Ex-d-cable gland M20 x 1.5 for Ø 7 - 12 mm	clear	<b>GHG 871 1001 R0101</b>
dKLK 23/Ex d	1 x Ex-d-cable gland M20 x 1.5 for Ø 7 - 12 mm	red	<b>GHG 871 1101 R0101</b>
dKLK 23/Ex d	1 x Ex-d-cable gland M20 x 1.5 for Ø 7 - 12 mm	green	<b>GHG 871 1201 R0101</b>
dKLK 23/Ex d	1 x Ex-d-cable gland M20 x 1.5 for Ø 7 - 12 mm	blue	<b>GHG 871 1301 R0101</b>
dKLK 23 V-CG-S /Ex d <sup>1)</sup>	1 x Ex-d-cable gland M20 x 1.5 for Ø 7 - 12 mm with V-CG-S-module and address-switch	clear	<b>GHG 871 2001 R0101</b>



dKLK 23 LED/eXLink	1 x eXLink coupler 2-pol. + PE for cable Ø 7.5 - 11 mm	clear	<b>GHG 871 4021 R0001</b>
dKLK 23 LED/eXLink	1 x eXLink coupler 2-pol. + PE for cable Ø 7.5 - 11 mm	red	<b>GHG 871 4121 R0001</b>
dKLK 23 LED/eXLink	1 x eXLink coupler 2-pol. + PE for cable Ø 7.5 - 11 mm	green	<b>GHG 871 4221 R0001</b>
dKLK 23 LED/eXLink	1 x eXLink coupler 2-pol. + PE for cable Ø 7.5 - 11 mm	blue	<b>GHG 871 4321 R0001</b>



dKLK 23 LED/Ex d	1 x Ex-d-cable gland M20 x 1.5 for Ø 7 - 12 mm	clear	<b>GHG 871 4021 R0101</b>
dKLK 23 LED/Ex d	1 x Ex-d-cable gland M20 x 1.5 for Ø 7 - 12 mm	red	<b>GHG 871 4121 R0101</b>
dKLK 23 LED/Ex d	1 x Ex-d-cable gland M20 x 1.5 for Ø 7 - 12 mm	green	<b>GHG 871 4221 R0101</b>
dKLK 23 LED/Ex d	1 x Ex-d-cable gland M20 x 1.5 for Ø 7 - 12 mm	blue	<b>GHG 871 4321 R0101</b>

1) For connection to CEAG emergency supply systems, with address switch for 20 addresses.

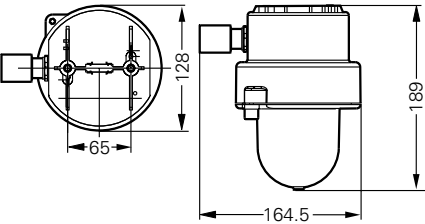
A wide selection of cable glands can be found at [www.crouse-hinds.de/products](http://www.crouse-hinds.de/products) or in the catalogue Part 2, Section 3

## Accessories

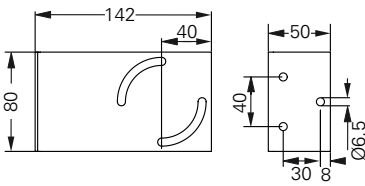


Type	Order No.
Flash module Eurolite E27 Strobe	<b>GHG 870 1912 R0001</b>
Exit sign cube (242 x 227 x 242 mm)	<b>400 71 344 115</b>
Compact fluorescent lamp 7 W with EVG	<b>GHG 870 9302 P0002</b>
Philips Master LED lamp 6W E27 CW 55	<b>GHG 870 1914 R0001</b>

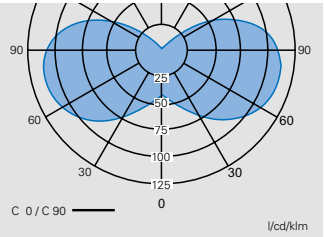
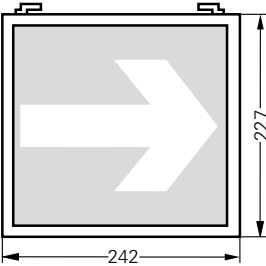
dKLK 23



Mounting bracket



Exit sign cube



Polar curve  
dKLK 23 / dKLK 23 V-CG-S



### Technical data

	dKLK 23	dKLK 23 LED	dKLK 23 V-CG-S
EC-Type Examination Certificate	BVS 10 ATEX E 003	BVS 10 ATEX E 003	BVS 10 ATEX E 003
IECEX Certificate of Conformity	IECEX BVS 10.0003	IECEX BVS 10.0003	IECEX BVS 10.0003
Marking accd. to 2014/34/EU	<div> <div>II 2G Ex d IIC T6 Gb</div> <div>II 2D Ex tb IIIC T80°C Db IP66</div> </div>	<div> <div>II 2G Ex d IIC T6 Gb</div> <div>II 2D Ex tb IIIC T80°C Db IP66</div> </div>	<div> <div>II 2G Ex d IIC T6 Gb</div> <div>II 2D Ex tb IIIC T80°C Db IP66</div> </div>
Marking accd. to IECEx	Ex d IIC T6 Gb Ex tb IIIC T80°C Db	Ex d IIC T6 Gb Ex tb IIIC T80°C Db	Ex d IIC T6 Gb Ex tb IIIC T80°C Db
Permissible ambient temperature	-20 °C up to +45 °C (dept. on lamp power and operating position)	-20 °C up to +40 °C	-20 °C up to +45 °C (dept. on lamp power and operating position)
Rated voltage	230 V AC / 230 V DC	230 V AC	230 V AC / 230 V DC
Rated current	approx. 30 mA	approx. 30 mA	approx. 40 mA
Frequency	50 - 60 Hz (AC)	50 - 60 Hz (AC)	50 - 60 Hz (AC)
Power factor cos φ	≥ 0.95	≥ 0.95	≥ 0.95
Protection class	I	I	I
Lamp / Illuminant	Compact-fluorescent lamp with integrated electr. ballast, lamp cap E27, lamp power 5-8 W, manufacturer Philips MASTER PL Electronic 5W/8 W or equivalent; flashmodule (see accessories)	Philips Master LED 6 W	Compact-fluorescent lamp with integrated electr. ballast, lamp cap E27, lamp power 5-8 W, manufacturer Philips MASTER PL Electronic 5W/8 W or equivalent;
Rated luminous flux	approx. 400 lm (7/8 W) <sup>1)</sup>	approx. 470 lm <sup>1)</sup>	approx. 400 lm (7/8 W) <sup>1)</sup>
Lamp cap	E27 accord. IEC 60238	E27 accord. IEC 60238	E27 accord. IEC 60238
Dimensions (L x W x H)	164.5 x 189 x 128 mm	164.5 x 189 x 128 mm	164.5 x 189 x 128 mm
Connecting terminals	flameproof inlet eXLink, 3-pole, 2 + PE, cage clamp terminal for cable Ø 8-11 mm, max. 1.5 mm <sup>2</sup> or flameproof cable gland M20 x 1.5 for cable Ø 7 - 12 mm; terminal L, N, PE max. 2.5 mm <sup>2</sup> clamp terminal	flameproof inlet eXLink, 3-pole, 2 + PE, cage clamp terminal for cable Ø 8-11 mm max. 1.5 mm <sup>2</sup> or flameproof cable gland M20 x 1.5 for cable Ø 7 - 12 mm, terminal L, N, PE max. 2.5 mm <sup>2</sup> clamp terminal	flameproof inlet eXLink, 3-pole, 2 + PE, cage clamp terminal for cable Ø 8-11 mm max. 1.5 mm <sup>2</sup> or flameproof cable gland M20 x 1.5 for cable Ø 7 - 12 mm, terminal L, N, PE max. 2.5 mm <sup>2</sup> clamp terminal
Enclosure colour	RAL 1013	RAL 1013	RAL 1013
Enclosure material	Glass-fibre reinforced polyester	Glass-fibre reinforced polyester	Glass-fibre reinforced polyester
Weight	1.7 kg	1.7 kg	1.7 kg
Degree of protection accd. to EN 60529	IP66	IP66	IP66
Protective cover / protective bowl	Polycarbonate	Polycarbonate	Polycarbonate

<sup>1)</sup> depends on used lamps