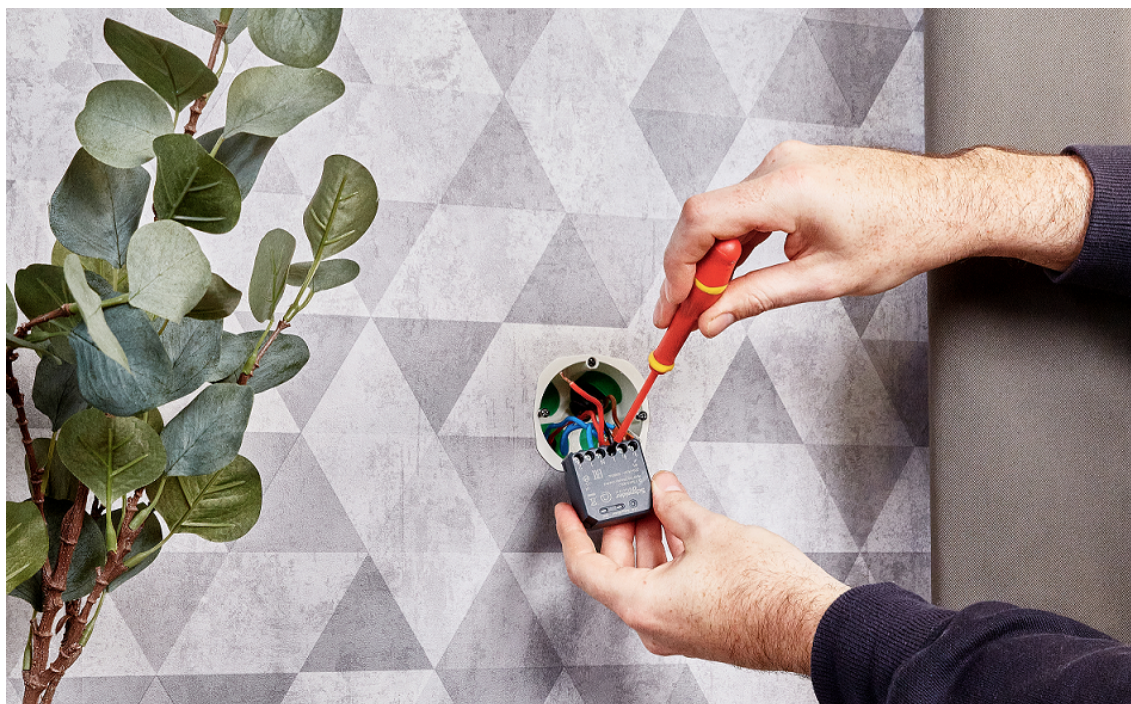


Wiser Micro Module Light Switch

Device user guide

Information about features and functionality of the device.

03/2025



Legal Information

The information provided in this document contains general descriptions, technical characteristics and/or recommendations related to products/solutions.

This document is not intended as a substitute for a detailed study or operational and site-specific development or schematic plan. It is not to be used for determining suitability or reliability of the products/solutions for specific user applications. It is the duty of any such user to perform or have any professional expert of its choice (integrator, specifier or the like) perform the appropriate and comprehensive risk analysis, evaluation and testing of the products/solutions with respect to the relevant specific application or use thereof.

The Schneider Electric brand and any trademarks of Schneider Electric SE and its subsidiaries referred to in this document are the property of Schneider Electric SE or its subsidiaries. All other brands may be trademarks of their respective owner.

This document and its content are protected under applicable copyright laws and provided for informative use only. No part of this document may be reproduced or transmitted in any form or by any means (electronic, mechanical, photocopying, recording, or otherwise), for any purpose, without the prior written permission of Schneider Electric.

Schneider Electric does not grant any right or license for commercial use of the document or its content, except for a non-exclusive and personal license to consult it on an "as is" basis.

Schneider Electric reserves the right to make changes or updates with respect to or in the content of this document or the format thereof, at any time without notice.

To the extent permitted by applicable law, no responsibility or liability is assumed by Schneider Electric and its subsidiaries for any errors or omissions in the informational content of this document, as well as any non-intended use or misuse of the content thereof.

Table of Contents

Safety Information.....	4
Wiser Micro Module Light Switch	5
For your safety	5
About the device.....	6
Installing the device	6
Testing the device.....	6
Quick Home Connect.....	7
Pairing Wireless Switch with Micro Module Light Switch (Puck)	8
Operating a Relay Switch	8
Resetting the Device in Quick Home Connect	10
LED Indications in Quick Home Connect.....	10
Troubleshooting in Quick Home Connect	10
Pairing the device with the Wiser Hub	11
Configuring the device	13
Selecting a location for the device	13
Renaming the device	14
Identifying the device	14
Using the device	15
Manual operation	15
Turning the puck On/Off using app	15
Schedule.....	16
Moments.....	17
Automation.....	21
Removing the device	27
Resetting the device	27
LED indication.....	29
Troubleshooting	29
Technical data	30
Compliance.....	31
Product Environmental Data.....	31
EU Declaration of Conformity	31
Trademarks.....	31

Safety Information

Important Information

Read these instructions carefully and look at the equipment to become familiar with the device before trying to install, operate, service, or maintain it. The following special messages may appear throughout this manual or on the equipment to warn of potential hazards or to call attention to information that clarifies or simplifies a procedure.



The addition of either symbol to a “Danger” or “Warning” safety label indicates that an electrical hazard exists which will result in personal injury if the instructions are not followed.



This is the safety alert symbol. It is used to alert you to potential personal injury hazards. Obey all safety messages that accompany this symbol to avoid possible injury or death.

DANGER

DANGER indicates a hazardous situation which, if not avoided, **will result in** death or serious injury.

Failure to follow these instructions will result in death or serious injury.

WARNING

WARNING indicates a hazardous situation which, if not avoided, **could result in** death or serious injury.

CAUTION

CAUTION indicates a hazardous situation which, if not avoided, **could result in** minor or moderate injury.

NOTICE

NOTICE is used to address practices not related to physical injury.

Wiser Micro Module Light Switch



CCT5011-0002W

For your safety

⚡⚠ DANGER

HAZARD OF ELECTRIC SHOCK, EXPLOSION, OR ARC FLASH

Safe electrical installation must be carried out only by skilled professionals. Skilled professionals must prove profound knowledge in the following areas:

- Connecting to installation networks.
- Connecting several electrical devices.
- Laying electric cables.
- Safety standards, local wiring rules and regulations.

Failure to follow these instructions will result in death or serious injury.

⚠ WARNING

HAZARD OF ELECTRIC SHOCK

- Observe the regulations for working on live parts.
- Only actuate the device buttons using insulated auxiliary equipment that meets the requirements of EN 60900.

Failure to follow these instructions can result in death, serious injury, or equipment damage.

About the device

The Wiser Micro Module Light Switch (hereinafter referred to as **Puck Switch / Micro Module Switch**) combines the advantages of smart switch functionality with ordinary mechanical push-button switches. It transforms a conventional switch into a connected device that can be controlled from the switch or through the Wiser app. It can switch ohmic, inductive or capacitive loads.

NOTE: Do not control any devices that depend on a permanent power supply.

Additional features:

- Remote controlled with maximum of 10 mechanical push-buttons.
- Setting a time schedule via Wiser Home app.

Installing the device

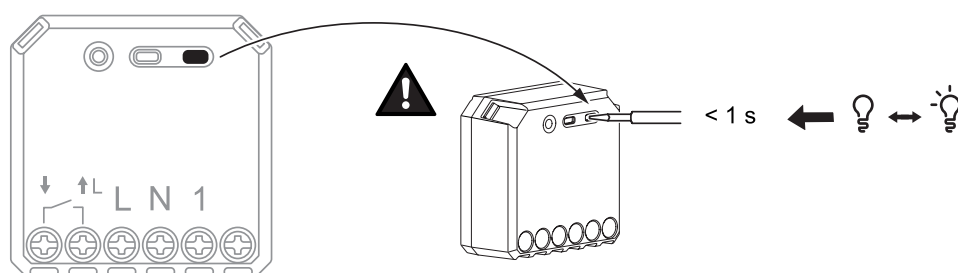
Refer to the installation instructions supplied with this product.

Testing the device

Before using the puck, manually test the puck and make sure that it works when connected to the devices.

⚠ WARNING
<p>HAZARD OF ELECTRIC SHOCK</p> <ul style="list-style-type: none"> • Observe the regulations for working on live parts. • Only actuate the device buttons using insulated auxiliary equipment that meets the requirements of EN 60900. <p>Failure to follow these instructions can result in death, serious injury, or equipment damage.</p>

Short press the test button once, the connected device turns on/off.



Quick Home Connect

Quick Home Connect is a wireless connectivity solution for Zigbee devices without the need for a Hub/Gateway or smartphone application. Quick Home Connect is your starting point for wireless home automation. It performs functions like switching, dimming and shutter control using the Connected Wireless Switch (hereinafter referred to as Wireless switch) via a Zigbee network.

The **Wireless switch** is a battery-powered wireless push-button switch that is used to control Zigbee devices (such as dimmer, shutter, switch, and socket) within the same Zigbee network.

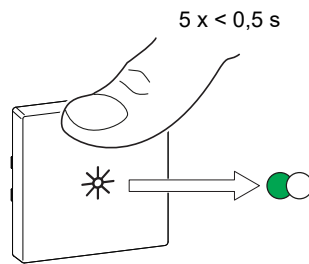
Limitations

- Quick Home Connect serves only as a room control solution.
- With a 1-gang Wireless switch, you cannot mix lighting and shutter control. However, with a 2-gang Wireless switch, you can assign one gang for dimming/switching and the other for shutter control, or vice versa.
- This solution does not support remote control, smartphone app usage, or scheduling features.

Pairing Wireless Switch with Micro Module Light Switch (Puck)

1. Short press the upper push button 5 times in quick succession on the Wireless switch.

The status LED blinks green.



2.

⚠ WARNING

HAZARD OF ELECTRIC SHOCK

- Observe the regulations for working on live parts.
- Only actuate the device buttons using insulated auxiliary equipment that meets the requirements of EN 60900.

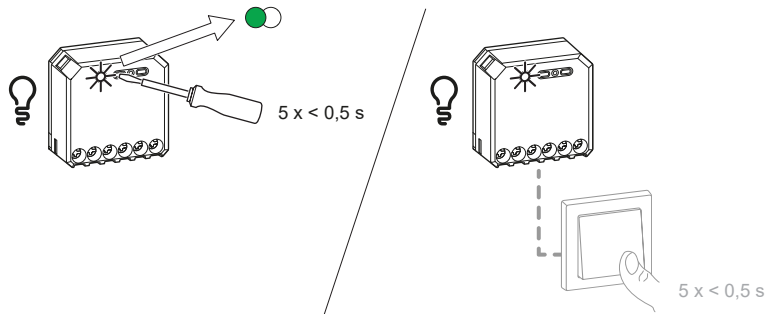
Failure to follow these instructions can result in death, serious injury, or equipment damage.

Follow either of the options to pair the Puck:

- Short press the Setup/Reset button 5 times in quick succession on the Puck.
- Short press the mechanical push button 5 times in quick succession.

The status LED blinks green on the Puck.

NOTE: If the Puck is located behind the mechanical push button, the status LED is not visible.

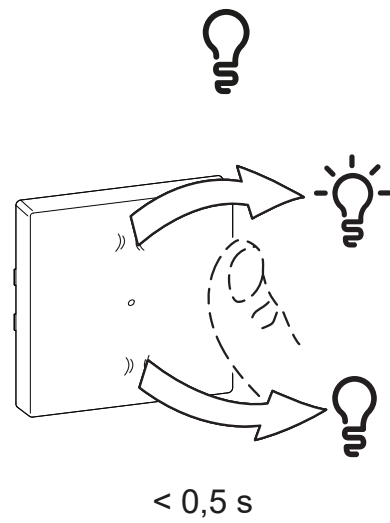


The light connected to the Puck blinks for a few times. The status LED stops blinking green on the Wireless switch and the Puck. The Puck can now be controlled by the Wireless switch.

Operating a Relay Switch

You can turn the light ON/OFF using the paired Wireless switch.

Short press the top or bottom of the Wireless switch ($< 0,5$ s) to turn ON/OFF the light.



Resetting the Device in Quick Home Connect

It is necessary to reset the devices in the following scenarios:



- Unpair the device in Quick Home Connect:
- Refer to
 - Resetting the Wireless switch
 - Resetting the Micro module light switch

When reset is done successfully. The Wireless switch and device returns to factory default.

- Integrating into Wiser System
 - If you wish to integrate the devices into Wiser System, reset all the devices in Quick Home Connect and refer to pairing the device with Wiser Hub/ Gateway.

LED Indications in Quick Home Connect

Pairing the device in Quick Home Connect

User Action	LED Indication	Status
Press the push button 5 times in quick succession.	LED blinks green, once per second. 	Pairing mode is active for 60 seconds. When pairing is completed, LED stops blinking. 

Troubleshooting in Quick Home Connect



Symptom	Possible cause	Solution
LED displays amber on the device.	Pairing not completed and returned to factory default.	Pair the Wireless switch and the device again. Refer to <ul style="list-style-type: none"> • Micro module light switch, page 8
Wireless switch not able to control the device reliably.	The Wireless switch and the device are too far away from each other.	Place the Wireless switch in a position closer to the device.
	The Wireless switch lost pairing.	Pair the device again. Refer to <ul style="list-style-type: none"> • Micro module light switch, page 8
	The Wireless switch battery is discharged.	Replace the battery of the Wireless switch

Scenario	Procedure
Control multiple devices with one Wireless switch.	To control multiple devices with a single Wireless switch, start by pairing it with one device. Then, use the same Wireless switch to pair with additional devices. NOTE: You can pair up to 7 devices to a single Wireless switch.
1-gang FLS with devices (relay switch, dimmer, shutter control, or socket outlet).	Pair the Wireless switch with any of the devices (relay switch, dimmer, shutter control, or socket outlet).
2-gang FLS with devices (relay switch, dimmer, shutter control, or socket outlet).	Pair either left or right Wireless switch with any of the devices (relay switch, dimmer, shutter control, or socket outlet). You can also pair another rocker of the Wireless switch with another device.

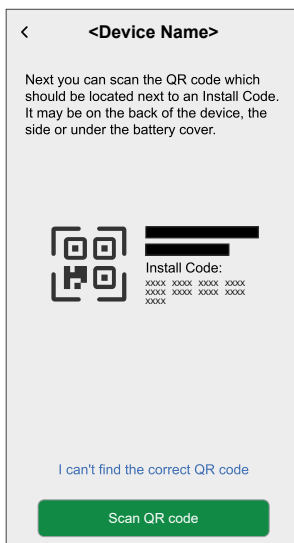
Pairing the device with the Wiser Hub

Using the Wiser Home app, pair your puck with the **Wiser Hub** to access and control the puck.

To pair the puck:

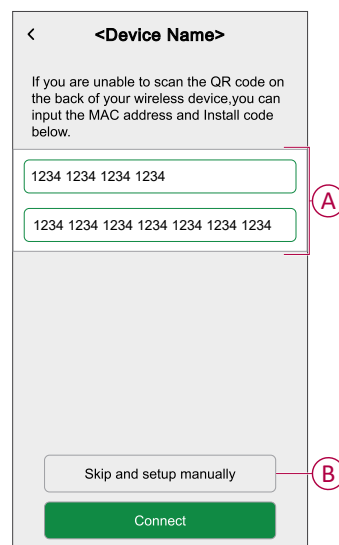
1. On the **Home** screen, tap .
2. Tap **Devices** >  > **Lights** > **Micromodule** > **Next**.
3. Tap **Scan QR code** and allow the Wiser Home app to access your camera. Then, scan the QR code located on the device.

NOTE: If you are unable to find the correct QR code, tap **I can't find the correct QR code** to pair the device manually and proceed to step 4.



If the QR code is incorrect, a message **Incorrect QR code scanned** will appear. Tap **I can't scan the QR code** and choose one of the following options:

- **(A):** Enter the MAC Address and Install Code, then tap **Connect**. The app will verify if the MAC address and Install code are valid.
- **(B):** Tap this option if you are unable to find the MAC address and Install code.

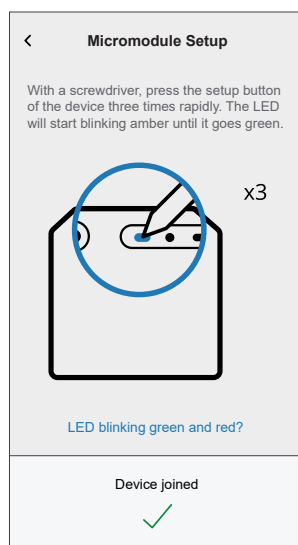
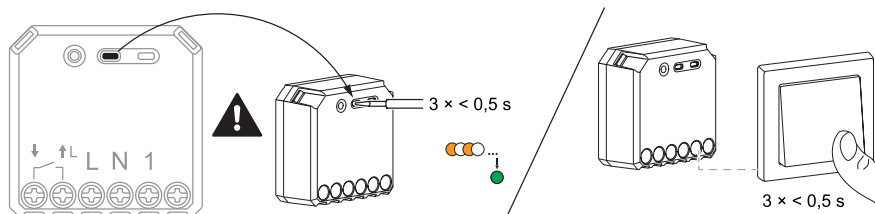


4. Tap **Next** and select any one of the options to add the device:

- Short press the Setup/Reset button 3 times on the puck with a screwdriver and make sure the LED blinks amber.
- Short press the push button 3 times.

NOTE: If the puck is located behind the push button, the status LED is not visible.

Wait for a few seconds until the LED turns green and the app confirms that the device is joined.



NOTE: If the LED is blinking green and red, see the instructions by tapping **LED blinking green and red?** or refer to the [Troubleshooting, page 29](#) topic.


5. Tap **Next** to enter the name of the device and assign the device to a new room or an existing room.

The **Puck** is now listed on the **Control** tab under the **All** and **Room** tabs.

Configuring the device

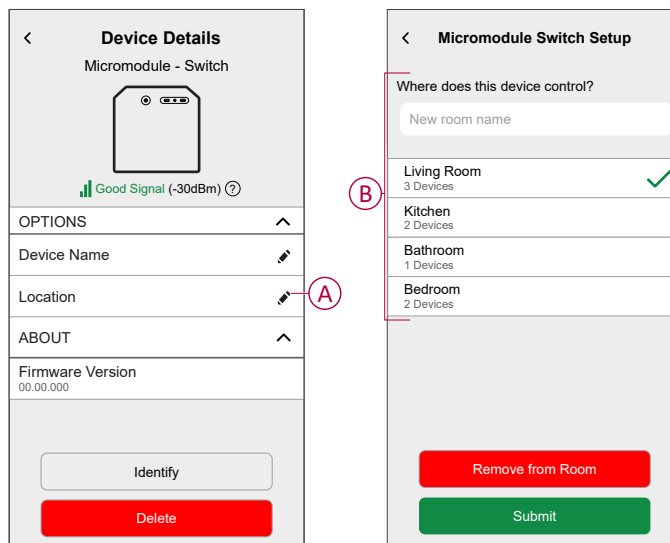
Selecting a location for the device

Using the Wiser Home app, add the puck to any room (such as living room, bedroom, kitchen etc).

1. On the **Home** screen, tap .
2. Tap **Devices > Micromodule Switch > Location** (A) to assign the puck to an existing room or a new room (B) and tap **Submit**.

NOTE:

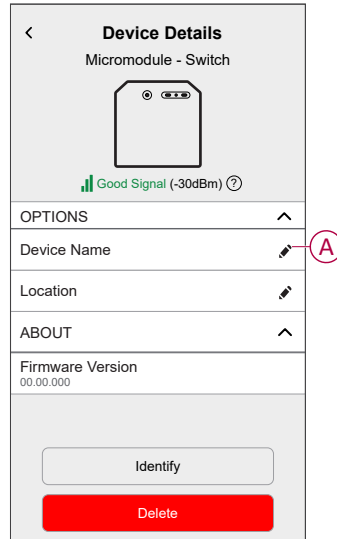
- Tap **Remove from Room** to remove the device from the existing room.
- **Micromodule Switch** is the name given to the device by the user. Any name can be assigned when pairing with the Wiser hub.



Renaming the device

Rename the device using the Wiser Home app.

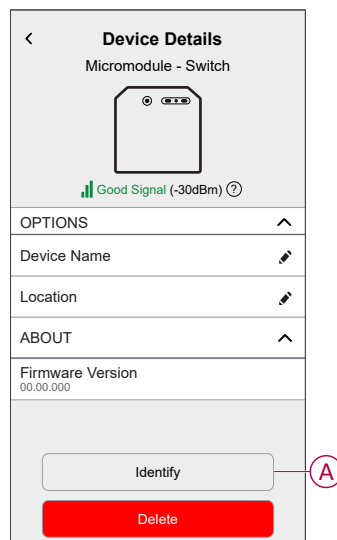
1. On the **Home** screen, tap .
2. Tap **Devices > Micromodule Switch > Device Name (A)** to rename the device.



Identifying the device

Using the Wiser Home app, identify the puck among the devices available in a home.

1. On the **Home** screen, tap .
2. Tap **Devices > Micromodule Switch > Identify (A)**.



The status LED blinks red and connected devices blinks on/off, upon successful identification of the puck.

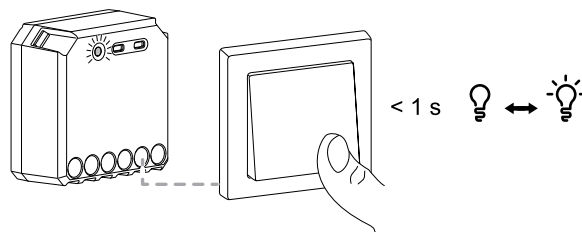
3. Tap **OK** to finish identifying the device.

Using the device

Manual operation

When the puck is connected to a mechanical push button, the connected devices can be controlled manually by short pressing the push button.


NOTE: When the puck is installed inside the wall box, the status LED is not visible while using the puck.



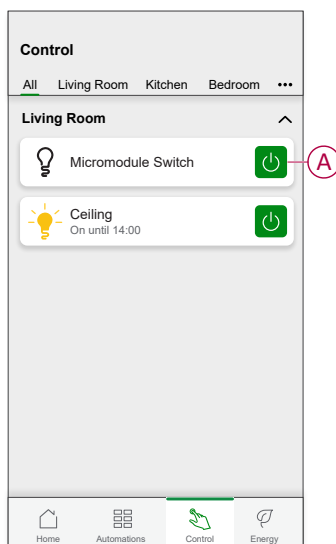
Turning the puck On/Off using app

Using the Wiser Home app, you can turn On/Off the puck remotely.

To turn On/Off the puck using the app:

1. On the **Control** tab, tap **All** devices or the room tab where the device is located.
2. Tap  (A) to turn On/Off the puck.

TIP: You can also turn the device On/Off when you add it to your **Favourite**. To know more about **Favourite**, refer to the **Managing Favourite** topic in the respective System User Guide.



NOTE: The **Control** tab will not be visible if you have only a single device in the Wiser System. All functions will be accessible through the **Home** screen.



Schedule

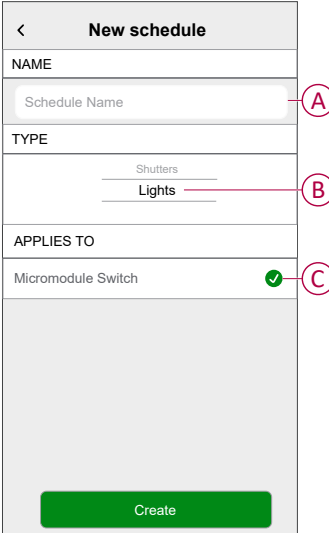
You can set up schedules to specify the times at which a state of the device changes.


Setting up a schedule

The devices can be fully controlled by a schedule. Once the schedule is set, the devices operates at a given time.



To create a schedule:

1. On the **Home** screen, tap .
2. Go to **Schedules** >  to create a schedule.
3. Enter the name of the schedule (A).
4. In the **TYPE** menu, select **Lights** (B).
5. In the **APPLIES TO** menu, select **Micromodule Switch** (C) from the listed devices.
6. Tap **Create** to setup events.



7. Under **EVENTS** menu, select a day and then tap  to add an event such as **STATE** (lights On/Off) and **WHEN** (sunrise/sunset or specific time range).
8. Tap **Set** to save the schedule.

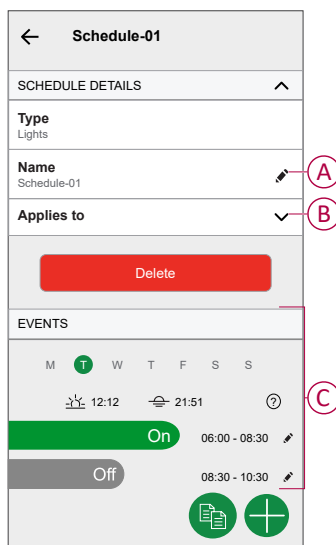
TIP:

- You can add multiple schedules based on your requirement. Select days, tap , set On/Off state and time.
- You can copy the existing schedule to another schedule or to the days of your choice. Tap .
 - Tap **Schedule** and select an existing schedule and tap **Copy**.
 - Tap **Day** and select the days you want to assign and tap **Copy**.
- When the schedule begins, you can see the **until time** on the **Control** tab under the device name.

Editing a schedule

1. On the **Home** screen, tap **Automations**  > **Schedules**.

2. Tap the schedule you want to edit.
3. Tap the **SCHEDULE DETAILS** and you can do the following actions:
 - Rename the schedule (A).
 - Within the **Applies to** (B) menu, you have the option to select from the listed devices or deselect those that are already selected.



NOTE: When the above changes are edited, the schedule is saved automatically.

4. Under the **EVENTS** (C) menu, you can do the following actions:
 - Tap to update an event, such as **STATE** (lights Off or dimming level in %), **WHEN** (sunrise/sunset or a specific time range), and you can also delete an event.
 - Tap **Set** to save the schedule.

Deleting a schedule

1. On the **Home** screen, tap **Automations** > **Schedules**.
2. Tap the schedule you want to delete.
3. Tap **SCHEDULE DETAILS**, tap **Delete**, and then select **OK**.

Moments

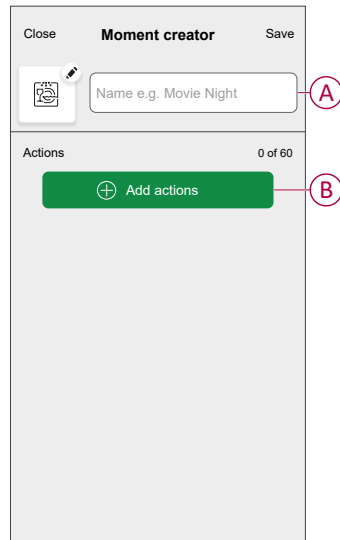
Moment allows you to group multiple actions that are usually performed together. By using the Wiser Home app, you can create moments based on your needs.

Creating a moment

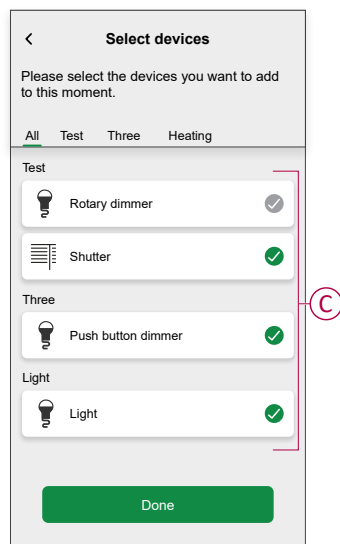
1. On the **Home** screen, tap .
2. Go to **Moments** > to create a moment.
3. Enter the name of the moment (A).

TIP: You can choose the cover image that best represents your moment by tapping .

4. Tap **Add actions** (B) to select the list of devices.



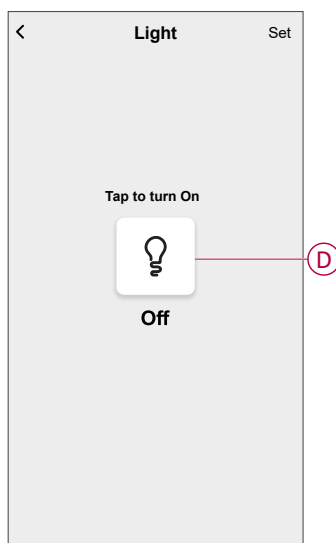
5. In the **Add actions** menu, you can select the devices (C).



6. Once all the device are selected, tap **Done**.

- On the **Moment creator** page, tap on the device to set the condition. For example, select micromodule switch.

- Tap  (D) to turn on.




When the desired condition is set, tap **Set**.



- Once all conditions are set, tap **Save**.

Once the moment is saved, it will appear on the **Moments** tab. You can tap on the moment to enable it.




TIP:

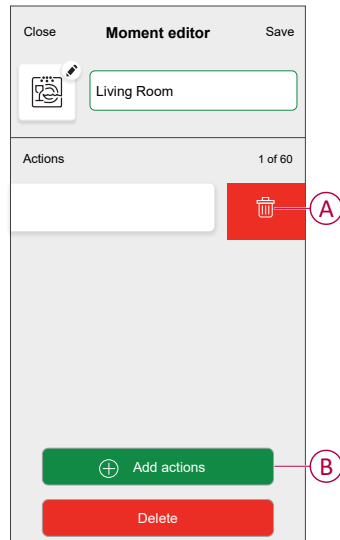
- If you want to see the created moments on the **Home** screen, go to **Home** >  > **Home Screen** > **Moments**. Enable the toggle button to view moments on the **Home** screen.
- You can also rearrange the moments by tapping **Edit** from the Moments tab on the Home screen, or by tapping **Automation** > **Moments** > **Reorder**.

Editing a moment

- On the **Home** screen, tap **Automations** .
- Go to **Moments**, locate the moment you want to edit and tap .



3. On the **Moment editor** page, you can perform following changes:

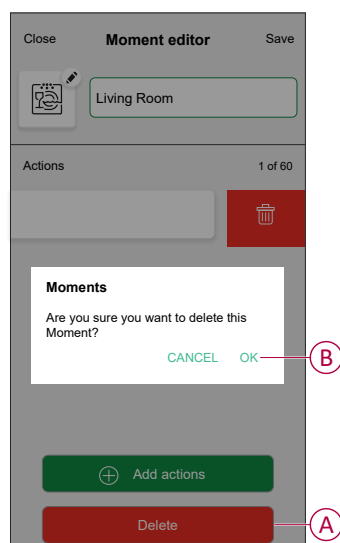
- Change the icon .
- Rename the moment.
- Tap each action to change the settings.
 - To remove an action, slide the action to the left and then tap  (A) to delete it.
 - Tap  **Add actions** (B) to add new action.



4. Tap **Save** to save the changes.

Deleting a moment



1. On the **Home** screen, tap **Automations** .
2. Go to **Moments**, locate the moment you want to delete and tap .
3. On the Moment editor page, tap **Delete** (A) and then tap **OK** (B).




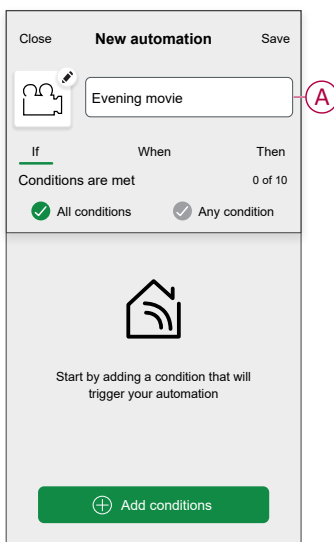
Automation

An automation allows you to trigger an action automatically or at scheduled times. By using the Wiser Home app, you can create automations based on your needs. This example demonstrates how a device works when the condition is met.

Creating an automation

1. On the **Home** screen, tap .
2. Go to **Automation** and then tap  to create an automation.
3. Enter a name of the automation (A) and select any of the following conditions to trigger an automation.
 - **All conditions:** All conditions must be met to trigger an automation
 - **Any condition:** Any one of the condition must be met to trigger an automation.

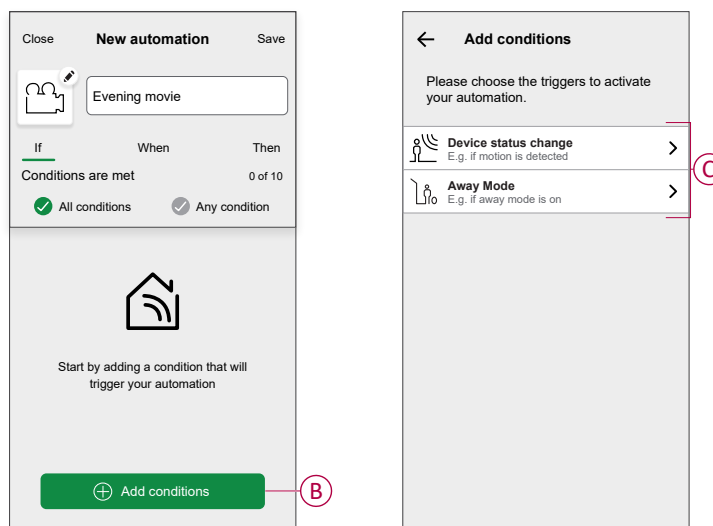
TIP: You can choose the cover image that represents your automation by tapping .



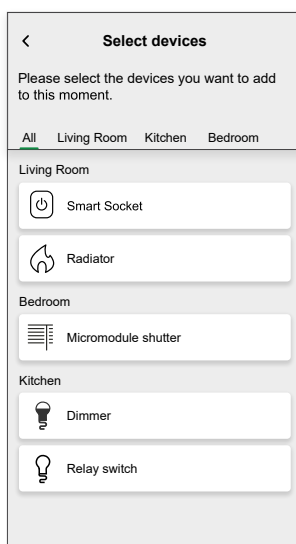
4. Tap **Add conditions** (B) and select any of the following (C):

- **Device status change** (Select the device): An automation will be triggered based on a device status, such as the opening of a shutter or the detection of movement by a motion sensor.
- **Away Mode** (Enable or Disable): Away mode can also trigger an automation to turn on the lights, close the shutter etc. Refer to the **Away Mode** topic in the respective System User Guide.

NOTE: Maximum 10 conditions can be added.



- a. In this example, we will select **Device status change** and choose a device to set the condition. Then, we will select the state of the device that will trigger the automation, such as the closed state of a micromodule shutter.



- b. After selecting the device, tap **Set** on the upper right corner.

TIP: If you want to change the condition, swipe it to the left and tap the bin icon. Then add a new condition with the required parameters.

5. To start your automation at a particular time, tap **When > Add time** and select any of the following (D):

NOTE: Maximum 10 time entries can be added.

- **Specific time of day** - The automation will trigger at a specific time of the day, such as at sunrise, sunset, or at 8:00 AM.
- **Period of time** - The automation will be trigger during time periods such as from sunrise to sunset, from sunset to sunrise, or from 8:00 AM to 5:00 PM.

Close New automation Save

e.g. Good Morning

If When Then

At this time 0 of 10

Start your automation at a specific time of day or define a period of time.

+ Add time

← Add time

Specific time of day
E.g. at 07:00 or at sunrise

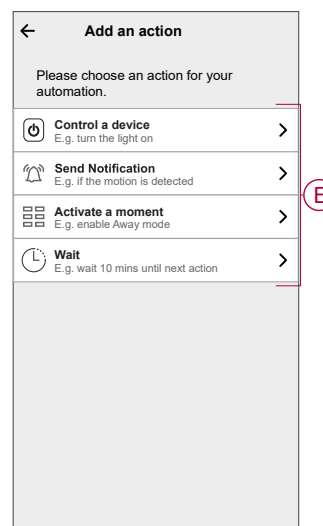
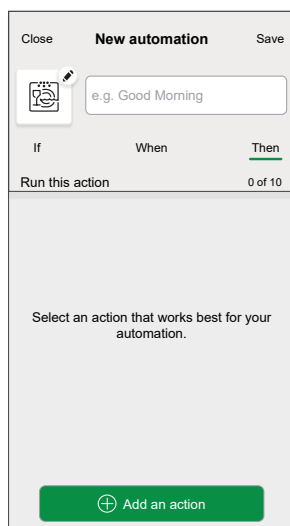
Period of time
E.g. from sunset to sunrise

D

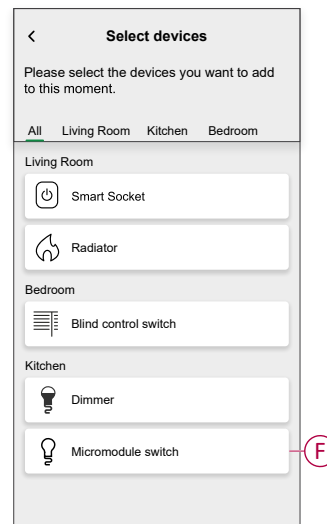
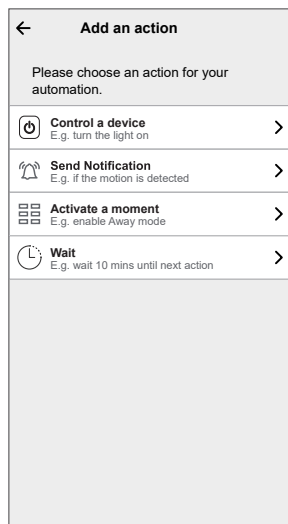
6. To add an action, tap **Then > Add an action** and select any of the following (E):

NOTE: Maximum 10 actions can be added.

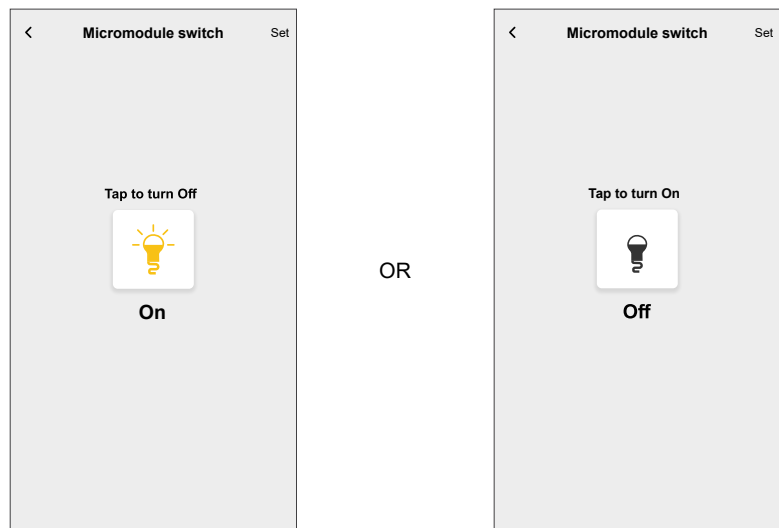
- **Control a device** - Select the device and set the desired state of the device.
- **Send notification** - You will be notified if the condition is met.
- **Activate a moment** - Select a Moment to activate during the automation.
- **Wait** - This option allows you to add a delay in an automation sequence. You can set the wait time in increments of 1 hour and 1 minute, up to a maximum of 24 hours. This feature is useful for delaying actions within an automation.



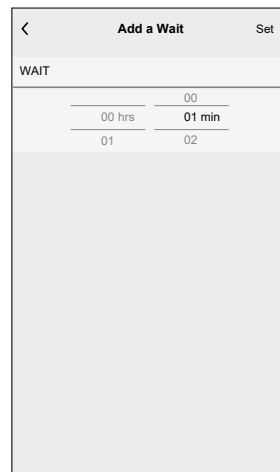
- a. In this example, we will select for **Control a device** and choose **Micromodule switch** (F) as the device to trigger an action.



- b. Set the state, such as turning the Micromodule switch On/Off. Then, tap **Set** located on the upper right corner

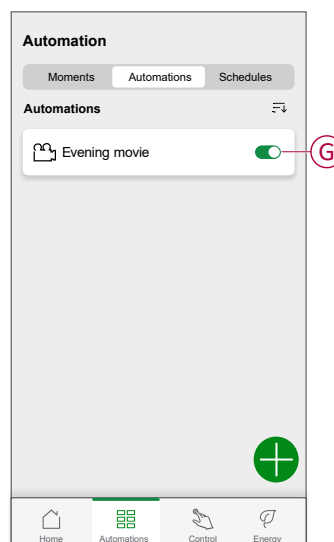


- c. Again, tap **Add an action** and select **Wait** option.
- d. Scroll through the minutes and set the wait time to 1 minute. Then, tap **Set** located on the upper right corner.







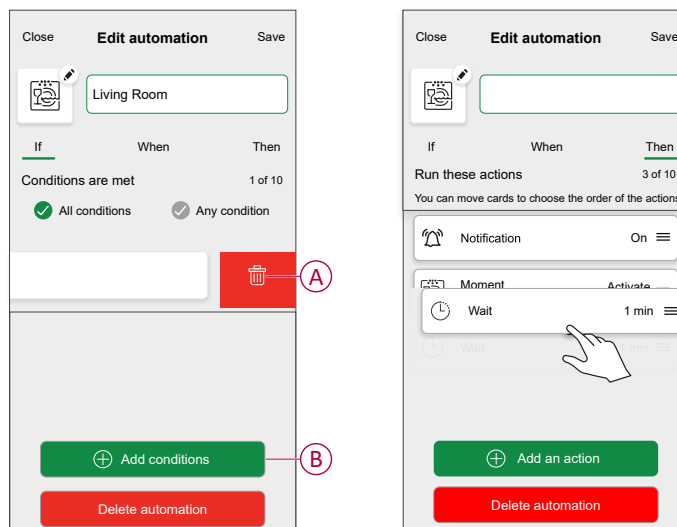
7. Tap **Save**.

The saved automation is displayed on the **Automation** tab. Tap the toggle switch (G) on the Automation tab to enable/disable the Automation.




Editing an automation

- On the **Home** screen, tap **Automations** .
- Go to **Automation**, tap the automation you want to edit.
- On the **Edit automation** page, you can perform following changes:
 - Change the icon .
 - Rename the automation.
 - Tap each condition to change the settings.
 - To remove a condition, slide the condition towards left and then tap  (A) to delete it.
 - Tap  **Add conditions** (B) to add new condition.
 - To change the order of actions, tap the **Then** option, and hold an action then drag and drop to the desired position.

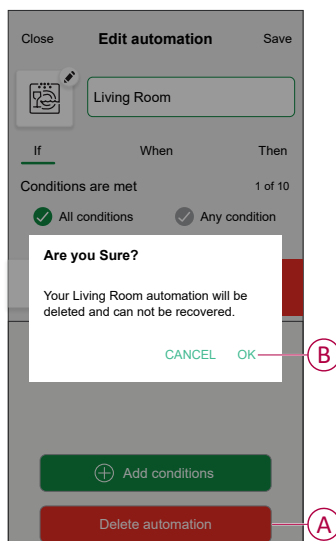


- Tap **Save** to save the changes.

Deleting an automation

- On the **Home** screen, tap **Automations** .
- Go to **Automation**, tap the automation you want to delete.

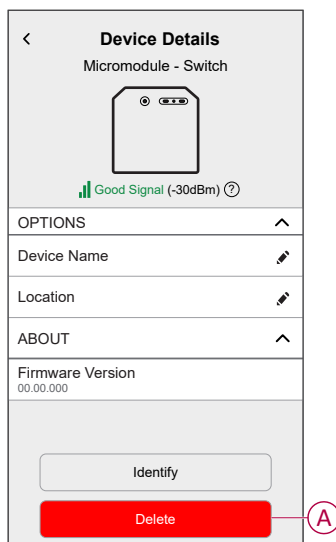
- On the **Edit automation** page, tap **Delete automation** (A) and read the confirmation message and then tap **OK** (B).



Removing the device

Using the Wiser app, you can remove the puck from the system.
To remove the device:

- On the **Home** screen, tap .
- Tap **Devices > Micromodule Switch > Delete** (A).



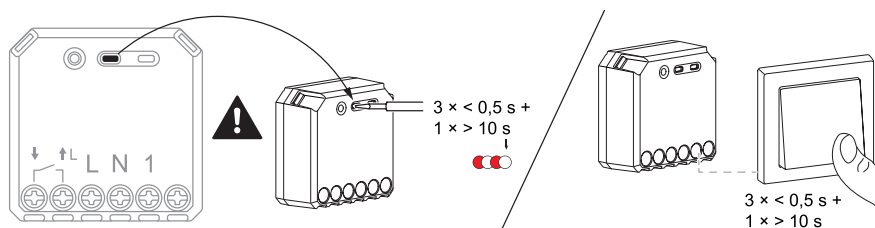
NOTE:

- Removing the device will reset the puck. After reset the LED turns amber indicating that the puck is ready to pair with another network.
- If there is a problem while pairing or resetting the puck, refer to [Resetting the device](#), page 27.

Resetting the device



Select any one of the options to reset the device to factory default mode:

- Short press the Setup/Reset button 3 times and then long press the Setup/Reset button once for 10 s on the puck with a screwdriver.
- Short press the push button 3 times and then long press the push button once for 10 s.





LED indication

Pairing the device




User Action	LED Indication	Status
Short press the setup/reset button or push button 3 times.	LED blinks amber once per second. 	Pairing mode is active for 30 seconds. When pairing is completed, LED displays green for a few seconds before turning Off. 

Resetting the device


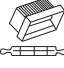








User Action	LED Indication	Status
Short press the setup/reset button or push button 3 times and hold it down once for > 10 s.	LED blinks red once per second. 	The device is in reset mode. The device then restarts and LED turns amber indicating that the device is ready for pairing. 

Troubleshooting

Error	Possible cause	Solution
The device is not ready to pair after the device is removed from the app.	The device is not reset correctly.	Reset to factory default settings, refer to Resetting the device, page 27

Symptom	Possible cause	Solution
<p>The device is not able to connect with the Hub. After pressing 3 times, the device LED blinks green/red for 30 s.</p>  <p>NOTE: This does not apply to newer Zigbee® model.</p>	Pairing mode has changed.	<ol style="list-style-type: none"> 1. Factory reset the device. 2. After reset, press top right corner of the switch for 4 times and then hold for 20 s, until the LED blinks red.  The device should reboot into the correct mode. 3. After reboot, press 3 times on top right corner of the switch to initiate pairing mode. LED flashes orange. 

Technical data

Nominal power rating for load type		
	Incandescent lamp	2200 W
	Halogen lamp	2000 W
	Iron core transformer	500 VA
	Motor	1000 VA
	Electronic step-down converter	1050 VA
	Capacitive load	10 A, 140 µF
	Fluorescent lamp	100 W
	LED	200 W
	Boiler	2000 W
	Room heater	1500 W

Nominal voltage	AC 220-240 V, 50/60 Hz
Nominal current	10 AX
Switching channel	1, dry contact
Standby	Max. 0.3 W
Operating Temperature	0 °C to 35 °C
Neutral conductor	Required
Connecting terminals	Max. 2 x 2.5 mm ² , solid or stranded types
Extension connection	Max. 10 mechanical push buttons
Length of all cable sections	Max. 50 m for 3-wire NYM cable
Fuse protection	16 A circuit breaker
Operating frequency	2405 - 2480 MHz
Max. radio-frequency power transmitted	<10 mW
IP rating	IP20
Product dimensions (H x W x D)	43 x 43 x 22 mm
Communication protocol	Zigbee 3.0 certified

Compliance

Product Environmental Data

Find and download comprehensive environmental data about your products, including RoHS compliance and REACH declarations as well as Product Environmental Profile (PEP), End-of-Life instructions (EOLi) and much more.

<https://www.se.com/myschneider>



General information about Schneider Environmental Data Program

Click the link below to read about Schneider Electric's Environmental Data Program.

<https://www.se.com/ww/en/about-us/sustainability/environmental-data-program/>



EU Declaration of Conformity

Hereby, Schneider Electric Industries, declares that this product is in compliance with the essential requirements and other relevant provisions of RADIO DIRECTIVE 2014/53/EU. Declaration of conformity can be downloaded on [se.com/docs](https://www.se.com/docs).

Trademarks

This guide makes reference to system and brand names that are trademarks of their relevant owners.

- Zigbee® is a registered trademark of the Connectivity Standards Alliance.
- Apple® and App Store® are brand names or registered trademarks of Apple Inc.
- Google Play™ Store and Android™ are brand names or registered trademarks of Google Inc.

- Wi-Fi® is a registered trademark of Wi-Fi Alliance®.
- Wiser™ is a trademark and the property of Schneider Electric, its subsidiaries and affiliated companies.
- Amazon Alexa™ is a trademark of AMAZON TECHNOLOGIES, INC.
- Google Home™ is a trademark of Google INC.

Other brands and registered trademarks are the property of their respective owners.

Schneider Electric
35 rue Joseph Monier
92500 Rueil Malmaison
France

+ 33 (0) 1 41 29 70 00

www.se.com

As standards, specifications, and design change from time to time, please ask for confirmation of the information given in this publication.

© 2021 – 2025 Schneider Electric. All rights reserved.

DUG_Micro Module Light Switch_WH-05