

Ovalis - Connected Single Socket Outlet 16 A

Device user guide

Information about features and functionality of the device.

09/2024



Legal Information

The information provided in this document contains general descriptions, technical characteristics and/or recommendations related to products/solutions.

This document is not intended as a substitute for a detailed study or operational and site-specific development or schematic plan. It is not to be used for determining suitability or reliability of the products/solutions for specific user applications. It is the duty of any such user to perform or have any professional expert of its choice (integrator, specifier or the like) perform the appropriate and comprehensive risk analysis, evaluation and testing of the products/solutions with respect to the relevant specific application or use thereof.

The Schneider Electric brand and any trademarks of Schneider Electric SE and its subsidiaries referred to in this document are the property of Schneider Electric SE or its subsidiaries. All other brands may be trademarks of their respective owner.

This document and its content are protected under applicable copyright laws and provided for informative use only. No part of this document may be reproduced or transmitted in any form or by any means (electronic, mechanical, photocopying, recording, or otherwise), for any purpose, without the prior written permission of Schneider Electric.

Schneider Electric does not grant any right or license for commercial use of the document or its content, except for a non-exclusive and personal license to consult it on an "as is" basis.

Schneider Electric reserves the right to make changes or updates with respect to or in the content of this document or the format thereof, at any time without notice.

To the extent permitted by applicable law, no responsibility or liability is assumed by Schneider Electric and its subsidiaries for any errors or omissions in the informational content of this document, as well as any non-intended use or misuse of the content thereof.

Table of Contents

Safety Information.....	5
Ovalis - Connected single socket outlet 16A	6
For your safety	6
About the device.....	7
Installing the device	7
Pairing the device with Wiser Hub	8
Configuring the device	9
Renaming the device	9
Changing the icon	10
Setting the device location in the room.....	11
Identifying the device	12
Anti-Tripping Management.....	13
Using the device.....	16
Switching operation manually	16
Switching operation using the app	16
Create or assign a schedule	17
Monitoring energy consumption	18
Moments.....	18
Automation.....	22
Removing the device	28
Resetting the device	29
LED indications	29
Troubleshooting	30
Technical Data	31

Safety Information

Important Information

Read these instructions carefully and look at the equipment to become familiar with the device before trying to install, operate, service, or maintain it. The following special messages may appear throughout this manual or on the equipment to warn of potential hazards or to call attention to information that clarifies or simplifies a procedure.



The addition of either symbol to a “Danger” or “Warning” safety label indicates that an electrical hazard exists which will result in personal injury if the instructions are not followed.



This is the safety alert symbol. It is used to alert you to potential personal injury hazards. Obey all safety messages that accompany this symbol to avoid possible injury or death.

DANGER

DANGER indicates a hazardous situation which, if not avoided, **will result in** death or serious injury.

Failure to follow these instructions will result in death or serious injury.

WARNING

WARNING indicates a hazardous situation which, if not avoided, **could result in** death or serious injury.

CAUTION

CAUTION indicates a hazardous situation which, if not avoided, **could result in** minor or moderate injury.

NOTICE

NOTICE is used to address practices not related to physical injury.

Ovalis - Connected single socket outlet 16A



S3X0559

For your safety

⚠ DANGER

HAZARD OF ELECTRIC SHOCK, EXPLOSION, OR ARC FLASH

Safe electrical installation must be carried out only by skilled professionals. Skilled professionals must prove profound knowledge in the following areas:

- Connecting to installation networks.
- Connecting several electrical devices.
- Laying electric cables.
- Safety standards, local wiring rules and regulations.

Failure to follow these instructions will result in death or serious injury.

About the device

The Connected Single Outlet 16 A (hereinafter referred to as a **Socket outlet**) is a connected electrical outlet designed to manage and control electrical devices in a convenient and efficient manner.

The Socket outlet is equipped with:

- **Temperature protection mechanism:** When the Socket outlet is used with a high load over a long time, the mechanism can switch off the Socket outlet, ensuring overheat protection.
- **Overload protection mechanism:** When the Socket outlet is used with a high load (~18A or higher), the mechanism can switch off the Socket outlet, ensuring overload protection.

Features of a Socket outlet:

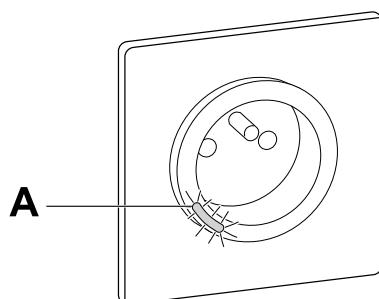
- **Remote access:** You can switch On/Off the Socket outlet using the app or through a connected wireless switch or through voice control (Google Home, Amazon Alexa, Siri) in addition to using the On/Off button on the device itself.
- **Power consumption:** You can monitor power (W) consumption using the app.
- **Easy installation:** The Socket Outlet fits in existing wall boxes (40 mm), no separate wall box requirement.
- **Easy scheduling:** You can create a schedule for the various device functions in an easy manner as per your specific requirements for comfort and convenience.
- **High safety:** The integrated overload and overheat protection ensures that the Socket outlet is safe at all times.

NOTE:

- Do not connect any devices that depend on a permanent power supply
- Do not mix different load types in the controlled socket
- Do not use multi-sockets in the controlled socket
- Do not use for EV charging

Operating element

A. Push button with status LED





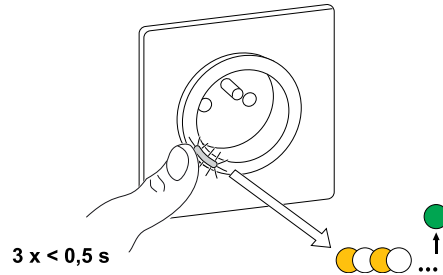
Installing the device

Refer to the installation instruction supplied with this product.

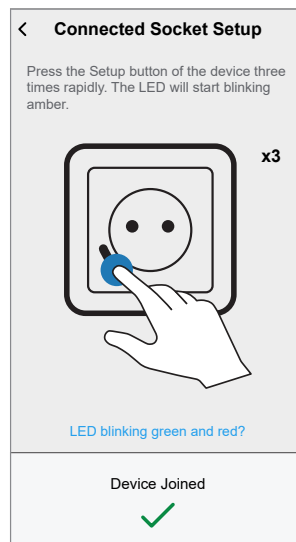
Pairing the device with Wiser Hub


Using the Wiser Home app, pair your Socket outlet with the **Wiser Hub** to access and control the Socket outlet.
To pair the Socket outlet:

1. On the Home page, tap .
2. Tap **Devices** >  and tap **Appliances** > **Connected Socket** > **Next**.
TIP: The next screen shows the joining process of Socket outlet.
3. Short press the push button 3 times on the Socket outlet.
Make sure the LED blinks amber.




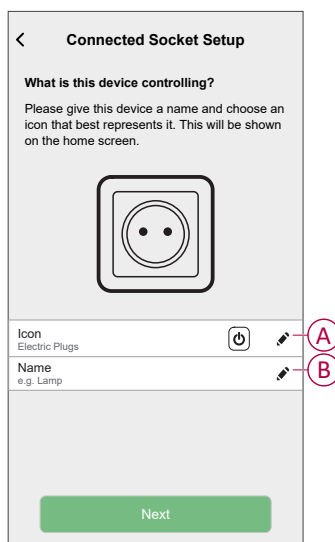
4. Wait for a few seconds until the LED turns green. You can also see in the app that the Socket outlet is joined.



5. Once the device is joined, tap  (A) and select an icon suitable for your load and tap **Save**.

NOTE: Electric plug icon is assigned by default.

6. Tap  (B) and assign a name.



The screen is titled "Connected Socket Setup". It asks "What is this device controlling?" and provides instructions: "Please give this device a name and choose an icon that best represents it. This will be shown on the home screen." Below this is a large icon of a square socket with two dots inside. At the bottom, there are two input fields: "Icon" with a power button icon and a pencil icon (labeled A), and "Name" with a pencil icon (labeled B). A green "Next" button is at the bottom.

7. Tap **Next** to assign the Socket outlet to an existing room or a new room.
8. Tap **Submit**.

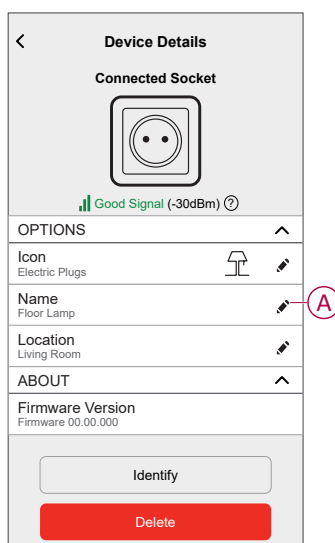
You can see the added Socket outlet on the **Home** page under the room tab or under **ALL** devices.

Configuring the device

Renaming the device

Using the Wiser Home app, you can rename your Socket outlet.
To rename the Socket outlet:

- On the Home page, tap .
- Tap **Devices > Connected Socket > Device Name** (A) to rename the Socket outlet.



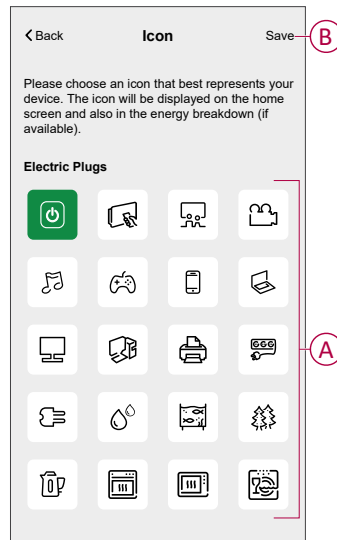
The screen is titled "Device Details" and shows "Connected Socket" with a socket icon. Below the icon is a signal strength indicator: "Good Signal (-30dBm)". There are two expandable sections: "OPTIONS" and "ABOUT". Under "OPTIONS", there are three fields: "Icon" (Electric Plugs), "Name" (Floor Lamp) with a pencil icon (labeled A), and "Location" (Living Room). Under "ABOUT", there is a "Firmware Version" field showing "Firmware 00.00.000". At the bottom, there are two buttons: "Identify" and "Delete".

Changing the icon

You can change the icon of the device.

1. On the **Home** page, tap  > **Devices** > **Connected Socket**.
2. Tap  **Icon**, select an icon of your choice (A) and tap **Save** (B).


IMPORTANT: If you have installed Socket outlet and PowerTag, changing the icon to another category will delete all the historical data. Refer to Energy view of individual devices.

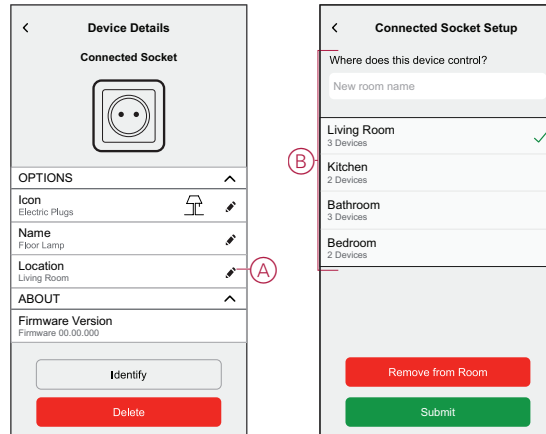


Setting the device location in the room

Using the Wiser Home app, you can assign your Socket outlet to any room (such as bedroom, living room, dining room etc.).

To assign a Socket outlet to a room:

1. On the Home page, tap .
2. Tap **Devices > Connected Socket > Location (A)** to assign the Socket outlet to the existing room or a new room (B) and tap **Submit**.



Identifying the device

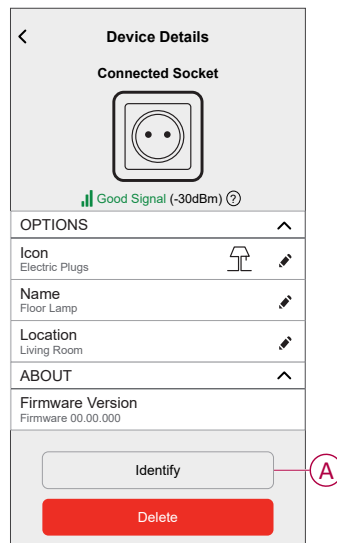
Using the Wiser Home app, you can identify a Socket outlet from the other available devices in the room.

To identify the Socket outlet:

1. On the Home page, tap .
2. Tap **Devices > Connected Socket > Identify (A)**.

NOTE:

- This feature flashes the Socket outlet LED, so you can identify the actual device. It may take up to a minute to start and flash the Socket outlet LED.
- The socket LED will continue to flash until you tap **OK**.



Anti-Tripping Management

The Anti-Tripping Management prevents the circuit breaker from tripping by switching off the load (e.g. Water Heater, EV Socket) or reducing the power of the load. This keeps the total consumption of the system under a defined limit. The limit value is set by your Contract limit, refer to Setting Tariff - *Peak/Off peak rate*. Devices that are eligible will be added automatically to the Anti-Tripping Management.

IMPORTANT:

- When a device is managed by the Anti-Tripping management, the Schedules, Moments and Automations for that device are not executed.
- This feature is available only in France and Germany.

NOTE: Maximum of 8 devices can be added.

Supported devices:

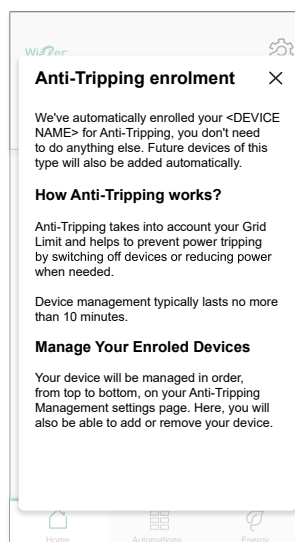
- Power Micromodule (Water Heater)
- EV Socket
- Smart Plug
- Smart Sockets

Pre-requisite:


- Configure one of your PowerTag as Grid. Refer to Pairing main PowerTag.
- Set the Contract limit.
A default contract limit is automatically set when pairing the main **PowerTag** as **Grid**. You can change the contract limit later if the Grid value set during the PowerTag installation does not match the tariff, refer to Setting - *Peak/Off peak rate*.
- Pair the supported devices. Refer to Pairing the device (based on what devices you have installed) - Power Micromodule, EV socket, Smart Plug, Smart Socket.

Enabling Anti-Tripping Management

Once the prerequisites are completed, user gets notified that this feature is available. The **Anti-Tripping** screen appears on the **Home** page.



1. Read the feature update and swipe to navigate to next screen.

2. Tap  to close the overlay screen.
 - The supported devices will be enrolled automatically.

Disabling Anti-Tripping Management

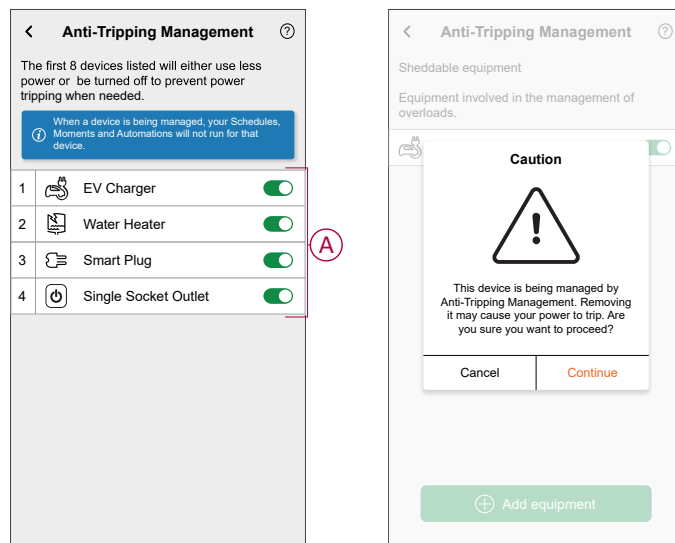
The Anti-Tripping Management feature for the supported devices can be deactivated at any time.

1. On the **Home** page, tap  > **Energy Management > Anti-Tripping Management**.


Tap the toggle switch (A) for the devices you want to disable.

If the device is currently in use, a notification will prompt you that deactivating this feature may cause your power to trip.

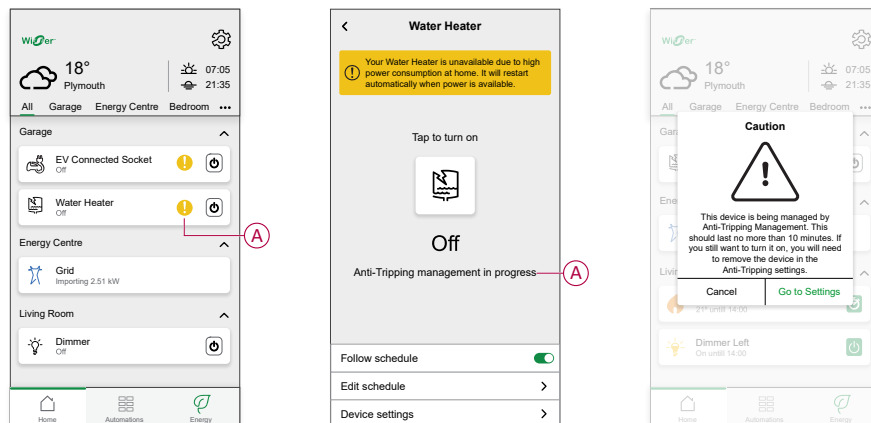
2. Tap **Continue** to disable.



Activation status

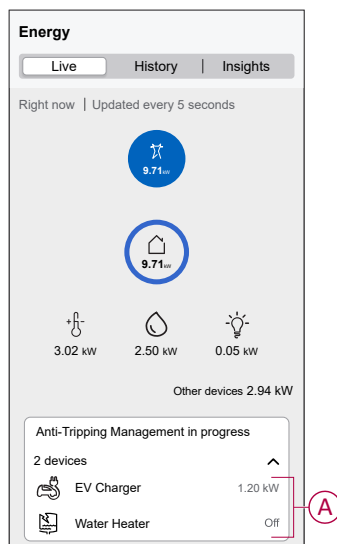
On the Home page and control panel page of the devices,  (A) denotes the Anti-Tripping management status.

- The devices will typically be off for upto 10 minutes. It will restart automatically when power is available.
- If you wish to turn on the device in Home page or control panel page, a **Caution** window is prompted that the device is being actively managed. Read the information and tap **Go to settings** and disable the toggle switch to remove the device from the Anti-Tripping Management.




Live status

When the Anti-tripping feature is active for any device, the load shedding (A) is shown in the **Live** tab.



Troubleshooting

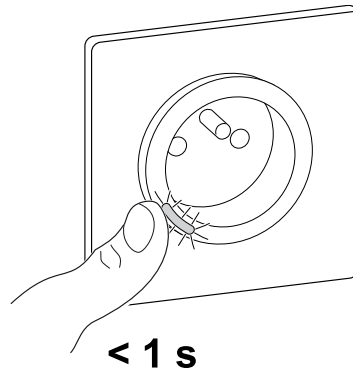
Error	Possible cause	Solution
 Algorithm is currently unavailable displayed in the Live tab.	<ul style="list-style-type: none"> The device is offline. System/Hub is unable to receive data from the device. Technical issue. 	Restart your Hub. If the problem still persists contact your installer or visit Help and Support and select your country.

Using the device

Switching operation manually

You can turn On/Off the Socket outlet manually by pressing the push-button. The LED turns red (default settings), which indicates the power output is On from the Socket outlet.


Short press the push button on the device once to switch On/Off the Socket outlet.

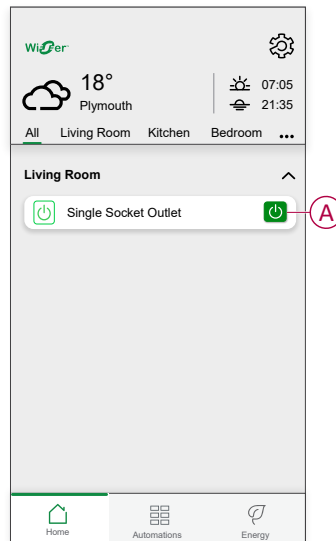


Switching operation using the app

Using the Wiser Home app, you can turn On/Off the Socket outlet remotely.

To turn on/off the Socket outlet:



1. Go to the Home page, tap **All** devices or a room tab where the Socket outlet is located.
2. Tap  (A) to turn On/Off the Socket outlet.

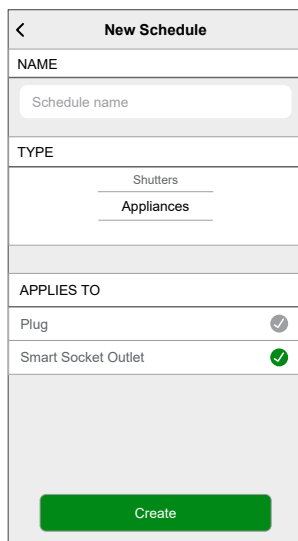


Create or assign a schedule

Using the Wiser Home app, you can create or assign a schedule to the Socket outlet.

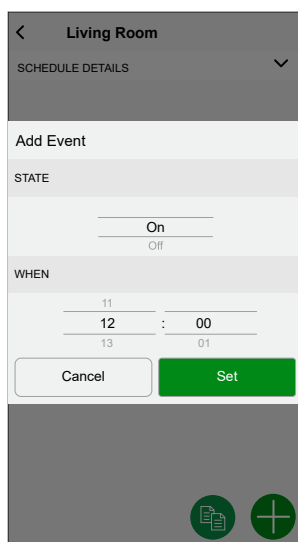
To create or assign a schedule:

1. On the **Home** page, tap .
2. Go to **Schedule** tab, tap .
3. Enter the Schedule name and select **Appliances** from the **TYPE** menu.
4. Select the **Smart Socket Outlet** from the **APPLIES TO** menu and tap **Create**.





The next screen shows by default an Event for the week that can be modified.


5. Tap  to add an event such as **STATE** (on/off) and **WHEN** (sunrise/sunset or specific time range).



6. Tap **Set** to save the schedule.

TIP:

- You can add multiple schedules based on your requirement. Select days, tap , set on/off state and time.
- You can copy the existing schedule to another schedule or to the days of your choice. Tap .
 - Tap **Schedule** and select an existing schedule and tap **Copy**.
 - Tap **Day** and select the days you want to assign and tap **Copy**.

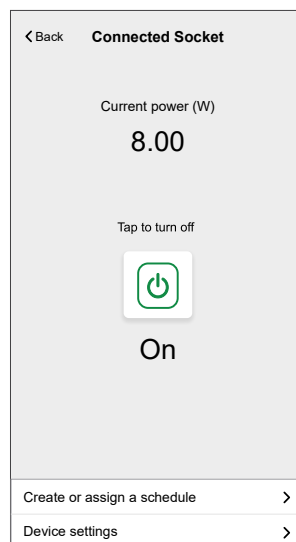
NOTE: On the home page, use the toggle switch  to turn on/off **Follow Schedule**.

Monitoring energy consumption

Using the Wiser app, you can monitor the energy consumption of the load connected to the device.

To check the energy consumption:

1. On the **Home** page, tap **All devices > Connected Socket**.
2. When the socket outlet is turned on, the power consumption is displayed in watts (W).





TIP: The power consumption varies depending on the load connected to the socket outlet.

Moments


Moment allows you to group multiple actions that are usually performed together. By using the Wiser Home app, you can create moments based on your needs.

Creating a moment

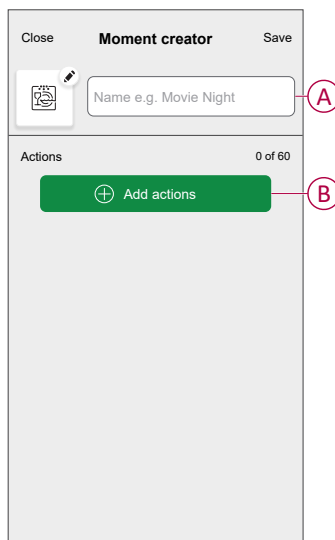
Moment allows you to group multiple actions that are usually performed together. By using the Wiser Home app, you can create moments based on your needs. To create a moment:

1. On the **Home** page, tap .
2. Go to **Moments > ** to create a moment.

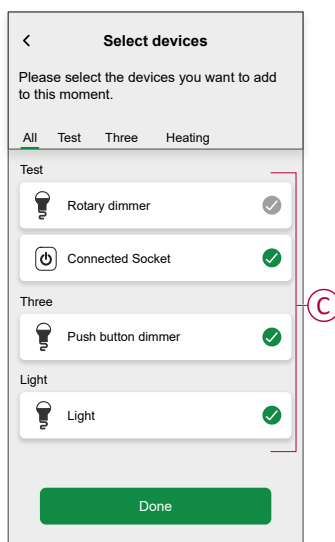
3. Enter the name of the moment (A).

TIP: You can choose the cover image that best represents your moment by tapping .

4. Tap **Add actions** (B) to select the list of devices.




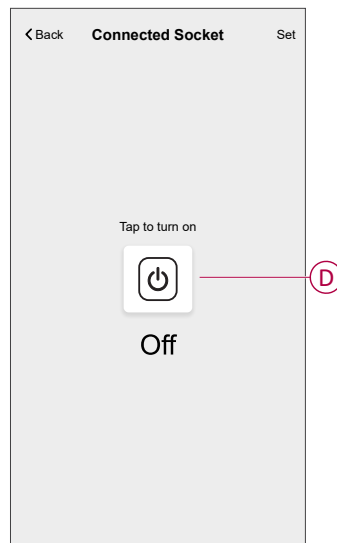
5. In the **Add actions** menu, you can select the devices (C).



6. Once all the device are selected, tap **Done**.

7. On the **Moment creator** page, tap on the device to set the condition. For example, select connected socket.

– Tap  (D) to turn on.





When the desired condition is set, tap **Set**.




8. Once all conditions are set, tap **Save**.

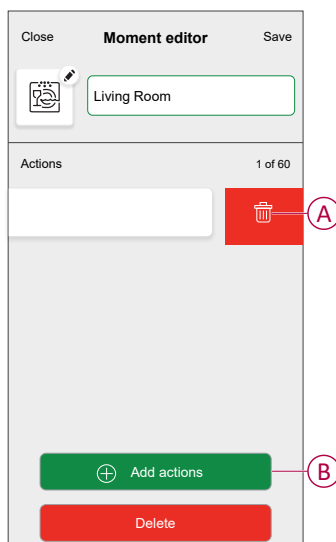
Once the moment is saved, it is visible on the **Moments** tab. You can tap on the moment to enable it.

Editing a moment

1. On the **Home** page, tap **Automations** .
2. Go to **Moments**, locate the moment you want to edit and tap .



3. On the **Moment editor** page, you can perform following changes:

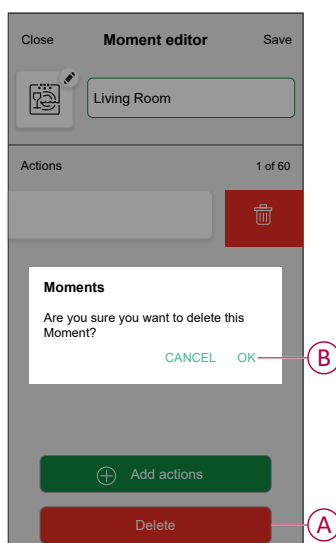
- Change the icon .
- Rename the moment.
- Tap each action to change the settings.
 - To remove an action, slide the action to the left and then tap  (A) to delete it.
 - Tap  **Add actions** (B) to add new action.



4. Tap **Save** to save the changes.

Deleting a moment



1. On the **Home** page, tap **Automations** .
2. Go to **Moments**, locate the moment you want to delete and tap .
3. On the Moment editor page, tap **Delete** (A) and then tap **OK** (B).




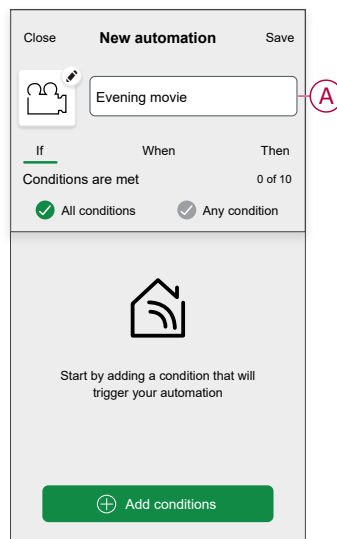
Automation

An automation allows you to trigger an action automatically or at scheduled times. By using the Wiser Home app, you can create automations based on your needs. This example demonstrates how a device works when the condition is met.

Creating an automation

1. On the **Home** page, tap .
2. Go to **Automation** and then tap  to create an automation.
3. Enter the name of the automation (A) and select any of the following conditions to trigger an automation.
 - **All conditions:** All conditions must be met to trigger an automation.
 - **Any condition:** Any one of the condition must be met to trigger an automation.

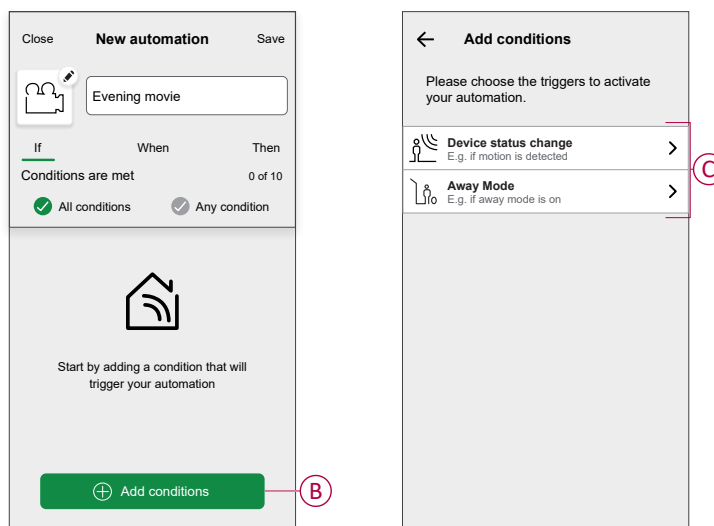
TIP: You can choose the cover image that represents your automation by tapping .



4. Tap **Add conditions** (B) and select any of the following (C).

- **Device status change** (Select the device): An automation will be triggered based on a device status, such as the opening of a shutter or the detection of movement by a motion sensor.
- **Away Mode** (Enable or Disable): Away mode can also trigger an automation to turn on the lights, close the shutter etc. For more information about **Away Mode**, refer to the system user guide.

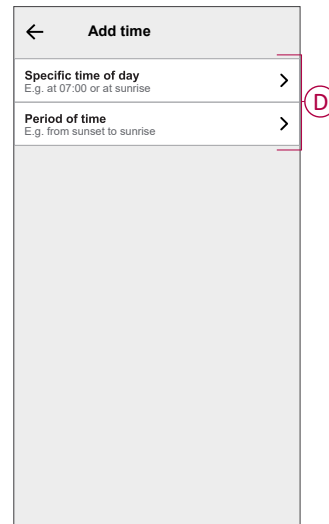
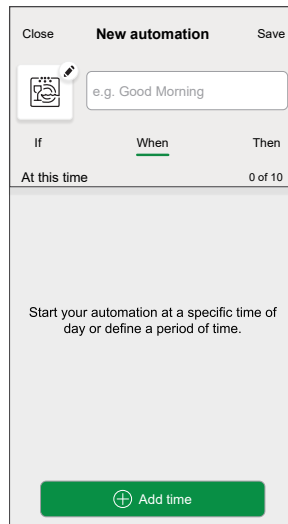
NOTE: Maximum 10 conditions can be added.



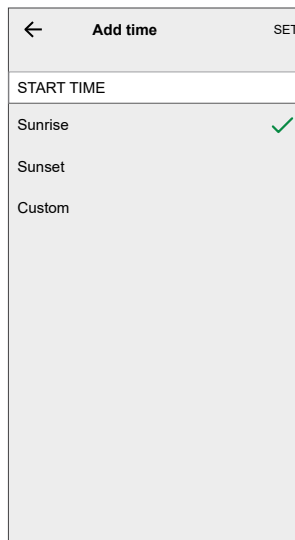
5. To start your automation at a particular time, tap **When > Add time** and select any of the following (D):

NOTE: Maximum 10 time entries can be added.

- **Specific time of day** - The automation will trigger at a specific time of the day, such as at sunrise, sunset, or at 8:00 AM.
- **Period of time** - The automation will be trigger during time periods such as from sunrise to sunset, or sunset to sunrise, or from 8:00 AM to 5:00 PM.



- a. In this example, we will choose **Specific time of day** and then select **Sunset** as the start time for the automation.

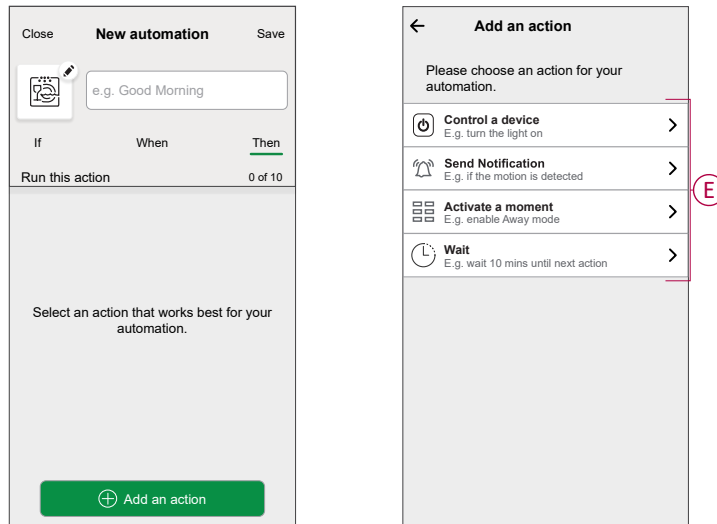


- b. After choosing the automation start time, tap on **Set** on the upper right corner.

6. To add an action, tap **Then > Add an action** and select any of the following (E):

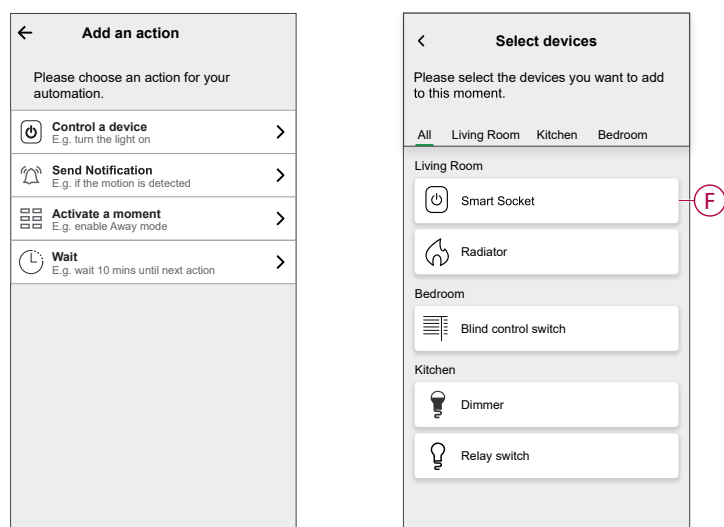
NOTE: Maximum 10 actions can be added.

- **Control a device** - Select the device and set the desired state of the device.
- **Send notification** - You will be notified if the condition is met.
- **Activate a moment** - Select a Moment to activate during the automation.
- **Wait** - This option allows you to add a delay in an automation sequence. You can set the wait time in increments of 1 hour and 1 minute, up to a maximum of 24 hours. This feature is useful for delaying actions within an automation.



- a. In this example, we will initially select **Control a device** and select **Smart Socket** (F) as the device to trigger an action, later, we will select for the **Wait** option to add a delay in the automation.

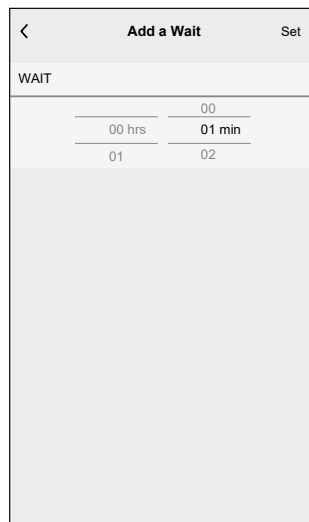
IMPORTANT: You cannot select the same device that you selected for **Add conditions** in Step 4. The device should be different.



- b. Set the state, such as On/Off state of the Smart Socket. Then, tap **Set** located on the upper right corner.

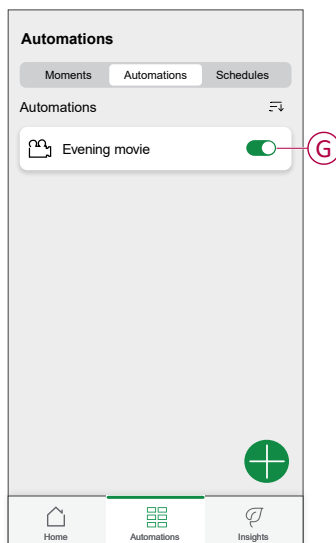


- c. Again, tap **Add an action** and select **Wait** option.
- d. Scroll through the minutes and set the wait time to 1 minute. Then, tap **Set** located on the upper right corner.







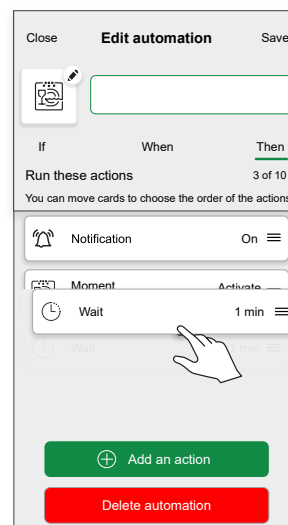
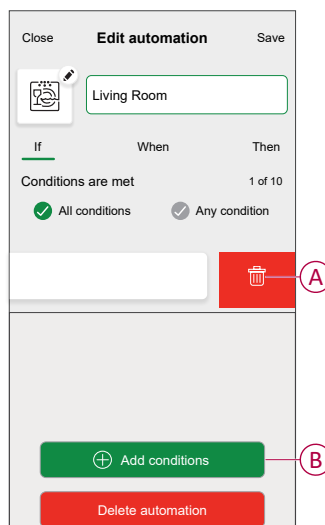
7. Tap **Save**.

The saved Automation is displayed on the **Automation** page. Tap the toggle switch (G) on the Automation page to enable/disable the Automation.




Editing an automation

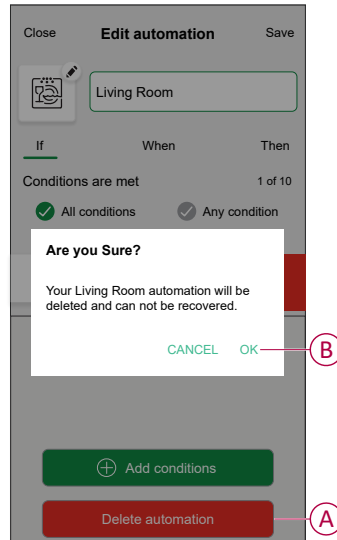
- On the **Home** page, tap **Automations** .
- Go to **Automation**, tap the automation you want to edit.
- On the **Edit automation** page, you can perform following changes:
 - Change the icon .
 - Rename the automation.
 - Tap each condition to change the settings.
 - To remove a condition, slide the condition towards left and then tap  (A) to delete it.
 - Tap  **Add conditions** (B) to add new condition.
 - To change the order of actions, tap the **Then** option, and hold an action then drag and drop to the desired position.



- Tap **Save** to save the changes.

Deleting an automation

1. On the **Home** page, tap **Automations** .
2. Go to **Automation**, tap the automation you want to delete.
3. On the **Edit automation** page, tap **Delete automation** (A) and read the confirmation message and then tap **OK** (B).

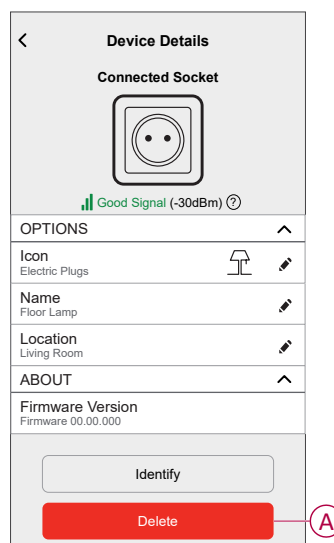


Removing the device

Using the Wisir Home app, you can remove the Socket outlet from the Wisir system.

To remove the Socket outlet:

1. On the Home page, tap .
2. Tap **Devices > Connected Socket > Delete** (A).
A confirmation window will be prompted, click **OK** to confirm.



Resetting the device

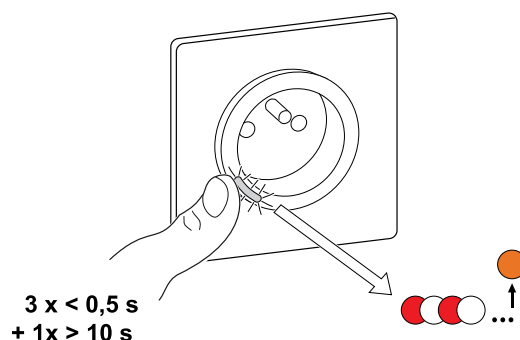
You can reset the Socket outlet to the factory default manually. example, when the Hub is replaced.

Short-press the push button three times (<0.5 s) and then long-press the push button once (>10 s). The LED blinks red after 10 s, and then release the push button.

Upon successful reset, the LED stops blinking. Then, the device restarts and blinks green for a few seconds.



NOTE:

- All configuration data, user data and network data are deleted.
- After reset, the LED turns amber, indicating that the socket is ready for pairing.





LED indications



Pairing the device

User Action	LED Indication	Status
Press the push button 3 times	LED blinks amber, once per second. 	Pairing mode is active for 30 seconds. When pairing is completed, LED displays solid green for a time, before turning Off. 


Resetting the device

User Action	LED Indication	Status
Press the push button 3 times and hold it down once for > 10 s.	After 10 s, the LED starts blinking red. 	The device is in reset mode. It is reset to the factory settings after 10 seconds. The device then restarts, and the LED glows solid orange. 

Setting (Default state)

LED Indication	Description
The Red LED glows. 	The Red LED glows when the output is switched ON.
All the LEDs are OFF. 	The LEDs are OFF, when the output is OFF.






Alarms

LED Indication	Description
Blinking red fast 	When there is an overload or over-temperature alarm and the device is switched off. Refer to the Troubleshooting, page 30 to clear the alarms.

Troubleshooting

Symptom	Possible cause	Solution
The Socket outlet is not turning ON.	The Socket outlet is broken, or there could be an alarm if the LED blinks red.	Initially, turn off the socket outlet, disconnect it from the power supply and turn it on after some time. If it still not working, you can replace the socket outlet. For more information about the wiring refer to the installation instructions.
When there is an alarm, the user cannot switch ON the output locally or remotely. LED blinks fast RED.	Clear the Socket outlet alarms.	To clear the alarm, press and hold the push button for 4 seconds. After 4 seconds, the blinking stops and the alarm will be cleared, you can use the socket outlet again. NOTE: Before clearing the alarm, you must verify the reason for overcurrent fault and thermal fault for safety.

Technical Data

Nominal power rating for load type		
	Incandescent lamp	2000 W
	LED	100 W, 12µF
	Iron core transformer	1500 VA
	Motor	1600 VA, max 7 A
	Electronic step-down converter	2000 VA
R	Resistance	3680 W
C	Capacitance	6 AX, max. 70 µF
L	Inductance	16 A, $\cos \varphi = 0.6$

Nominal voltage:	AC 230 V~, 50 Hz
Standby:	max 0.4 W
Fuse protection:	16 A miniature circuit breaker
Connecting terminals:	Terminals for max. 2x2.5 mm ²
Operating frequency:	2405-2480 MHz
Max. radio-frequency power transmitted:	< 10 mW
Protection:	IP20
Measuring accuracy:	± 1 %for loads > 25 W
Communication protocol:	Zigbee 3.0 certified

Compliance

Compliance information for Green Premium products

Find and download comprehensive information about Green Premium products, including RoHS compliance and REACH declarations as well as Product Environmental Profile (PEP) and End-of-Life instructions (EOLI).

<https://checkaproduct.se.com/>



General information about Green Premium products

Click the link below to read about Schneider Electric's Green Premium product strategy.

<https://www.schneider-electric.com/en/work/support/green-premium/>



EU Declaration of Conformity

Hereby, Schneider Electric Industries, declares that this product is in compliance with the essential requirements and other relevant provisions of RADIO DIRECTIVE 2014/53/EU. Declaration of conformity can be downloaded on se.com/docs.

Trademarks

This guide makes reference to system and brand names that are trademarks of their relevant owners.

- Zigbee® is a registered trademark of the Connectivity Standards Alliance.
- Apple® and App Store® are brand names or registered trademarks of Apple Inc.
- Google Play™ Store and Android™ are brand names or registered trademarks of Google Inc.
- Wi-Fi® is a registered trademark of Wi-Fi Alliance®.
- Wiser™ is a trademark and the property of Schneider Electric, its subsidiaries and affiliated companies.
- Amazon Alexa™ is a trademark of AMAZON TECHNOLOGIES, INC.
- Google Home™ is a trademark of Google INC.
- Airzone is a trademark of Equip Outdoor Technologies UK Limited.
- Aidoo is a trademark of CORPORACIÓN EMPRESARIAL ALTRA S.L. company.

Other brands and registered trademarks are the property of their respective owners.

Schneider Electric
35 rue Joseph Monier
92500 Rueil Malmaison
France

+ 33 (0) 1 41 29 70 00

www.se.com

As standards, specifications, and design change from time to time,
please ask for confirmation of the information given in this publication.

© 2021 – 2024 Schneider Electric. All rights reserved.

DUG_Ovalis SSO_WH-04