

LED Flood Light Manual



Matters needing attention

- Before installing the lighting fixtures, please read this instruction manual carefully.
- The lighting fixtures should be installed, connected and tested by a certified installer based on the local regulations.
- Lamps should always be installed or replaced with care.
- Please check the local voltage in accordance with the product requirements before using the product.
- Relamping only can be done when the power is off and the lamp is completely cooled down.
- When a lamp is to be cleaned, make the power off and let it cool down completely.Clean the fixture with a soft cloth and a standard PH neutral detergent. Stainless steel finishing should be maintained regularly.
- Misuse of, or changes to the fixture shall nullify the guarantee.
- Don't cover the fixtures with flammable materials.
- Exclusively replaced by the manufacturer or his service agent or the similar qualified person in order to avoid a hazard.

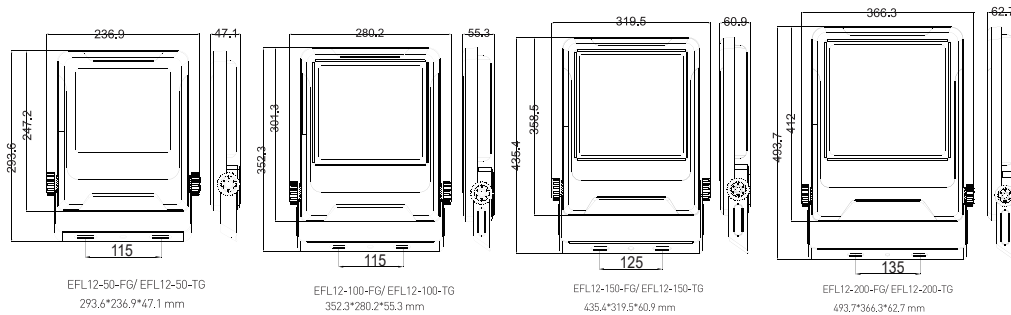
Temperature Characteristics T-ambient 25°C

Temperature	
Operating	-20 ~+40 C
Storage	-20~+65 C

Electrical Characteristics

Input Voltage:	
EU:	AC220-240V 50/60Hz
PF:	>0.9 THD<20%
Power Efficiency: ≥0.9	

1.Product Dimensions

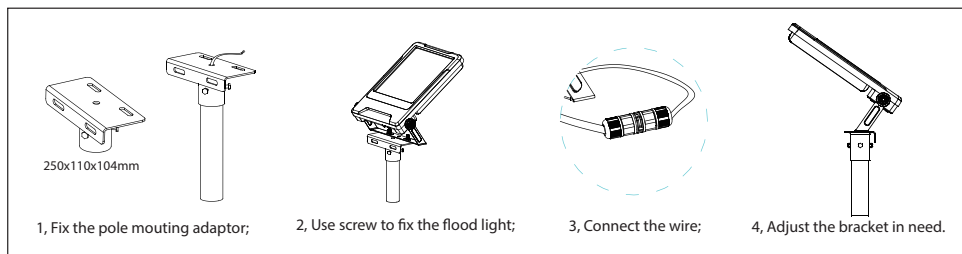
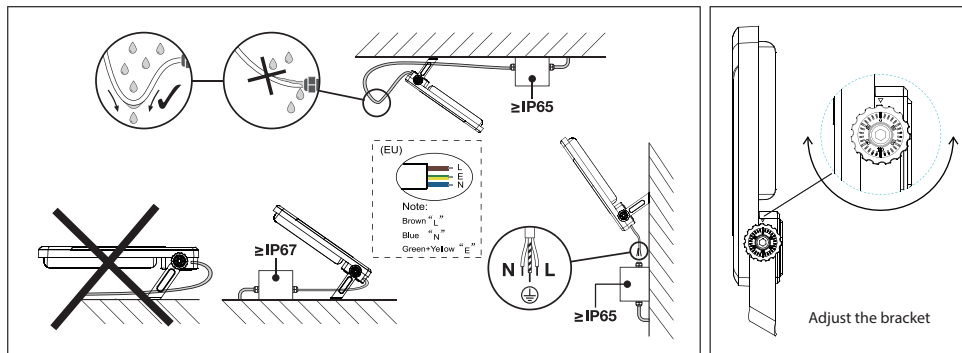


2.Installation

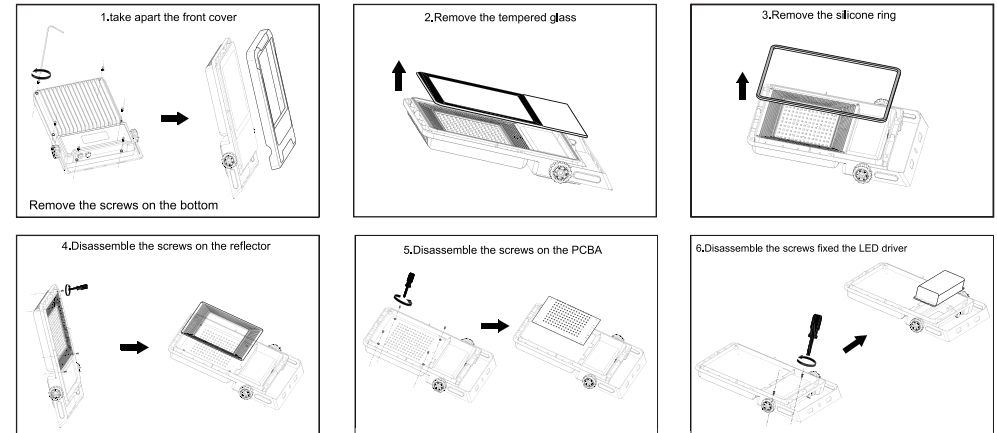
Please disconnect the power supply before installation. Live operation is strictly prohibited during installation.



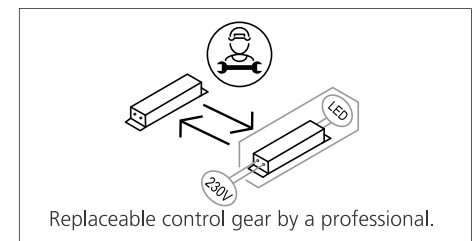
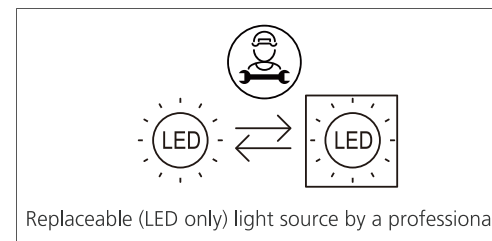
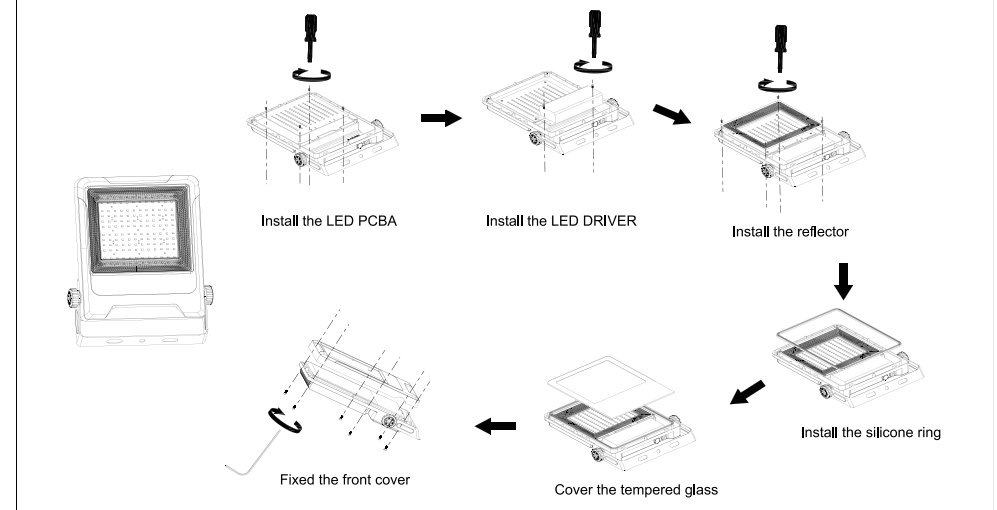
1. Open two holes of the same size as 'A' in the position specified in the construction drawing and lock the screws.
2. Select the lamp body to adjust the required Angle.
3. Finally, connect the blue line and the brown line to the 'L' and 'N' of the mains, Yellow and green grounding wire. Make sure the connection is correct and then switch on the power.



3.LED module replacement instruction



Use the new one instead of defected part, operating guide as below, till the maintainance finished.



This product contains a light source of energy efficiency class C.