

# PART A

WAARSCHUWING  
AVERTISSEMENT  
WARNING  
WARNUNG  
ΠΡΟΣΟΧΗ

Lees de algemene gebruiksvoorwaarden : PART B  
Lire attentivement les conditions generales d'utilisation: PART B  
Read attentively the general instructions: PART B  
Lesen Sie die allgemeinen Gebrauchsanweisungen: PART B  
Διαβάστε τις γενικές οδηγίες : PART B

BEL LIGHTING sprl  
Avenue Ernest Solvay 42  
B-1480 Saintes (Tubize)  
Belgium  
Phone: +32(0)2 3552428  
Fax: +32(0)2 3550396  
e-mail: info@bel-lighting.com  
www.bel-lighting.com



last update 17/01/2024

BEL1211

## Recessed boxes for uplighting



Name		Dimension		Code	Material	For product (name)
Pop 1	a	Ø 55 mm	Length 65mm	X016A	Plastic PVC tube	Xeno ...
	b	Ø 55 mm	Length 150mm	X016B		
Pop 3		Ø 45 mm	Length 55mm	X053	Plastic PVC tube	Genesis
Pop 4	a	Ø 70 mm	Length 100mm	X066A	Galvanised tube	Zaxor Mini
	b	Ø 70 mm	Length 150mm	X066B		
Pop 5	a	Ø 106 mm	Length 117mm	X055A	Plastic PVC tube	Zaxor Led /...Led-O/...10° Zaxor GZ/...GZO
	b	Ø 106 mm	Length 250mm	X055B		
Pop 6	a	Ø 160 mm	Length 150mm	X056A	Plastic PVC tube	Zaxor HPL / Bolas O-HPL
	b	Ø 160 mm	Length 250mm	X056B		
Pop 7		Ø 200 mm	Length 200mm	X057	Plastic PVC tube	Zaxor O-HPL
Pop 8	a	Ø 80 mm	Length 80mm	X067A	Plastic PVC tube	Bolas VHX Bolas / ...Led / ...HPL /...F
	b	Ø 80 mm	Length 160mm	X067B		
Pop 9	a	Ø 37 mm	Length 47mm	X068A	Plastic PVC tube	Zona ... / Tango ....
	b	Ø 37 mm	Length 150mm	X068B		
Pop 10	a	Ø 75 mm	Length 120mm	X054A	Plastic PVC tube	Perla Dark / Pharos VHX
	b	Ø 75 mm	Length 250mm	X054B		

# RECOMMENDATIONS FOR OUTDOOR WIRING



Luminaires must be installed and connected by a qualified technician.

## Recessed floor lights

### THE CONNECTION

So that your recessed floor can work, you must naturally connect them to the mains. This connection must be protected against humidity, specified by the IP (International Protection) value of the product. This value has two numbers: the first number designates protection against solid objects and the second number designates protection against water and humidity.

Recessed floor luminaires are often installed in places subject to bad weather, so it is imperative:

- To opt for a connection solution with an IP68 rating.
- To seal the cable sheath and not the conductors.
- To use a recessing box when installed in the ground.

Errors to avoid:

- Use of undesignated IP20 connectors (photo 1) or adhesive tape (photo 2).
- The waterproof connection is not made on the cable sheath but on the conductors (photos 3 and 4).
- The resin or the insulating gel is not properly cast (photo 5).

Poor seals, even partials, will gather up water in the product through the cable. This phenomenon of rising water by «capillarity» damages the electrical components and it no longer allows the proper operation of the product.



1



2



3



4



5

## IP68 JUNCTION BOX

The safest way to do this, is to make the connection inside the junction box and fill this up with resin (or bicomponent gel). The casting resin will keep your connection and your floor uplighter completely free of water.

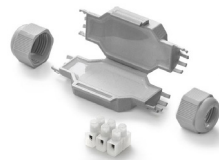
Making your connection in watertight connectors with cable glands is another possibility. However, this option is less safe. Chances are that water will still find its way.

Once the connection in the junction box is made and you've tested your spots multiple times, you can fill the junction box with resin. Don't forget to test your spots before casting the resin. Once the resin is solidified, you cannot make any more changes to your connection!



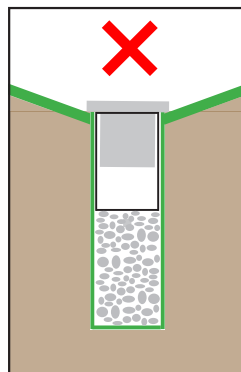
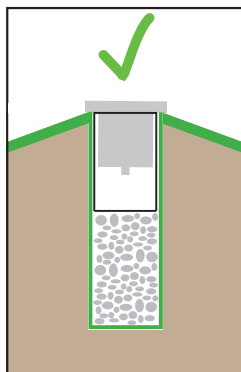
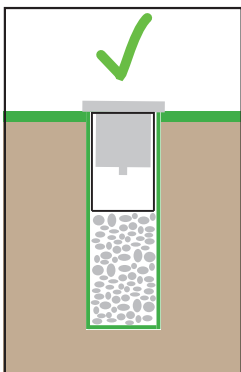
## SEALED CONNECTOR

This connector with cable glands can be used in the recess or under a wooden floor to make an IP68 waterproof connection between 2 or 3 flexible rubber cables type H07RN-F or equivalent. Once the connection has been made, this connector has the advantage of being completely removable.



## LOCATION

Never install your ground spots in a den. Install them on a flat or a higher surface.



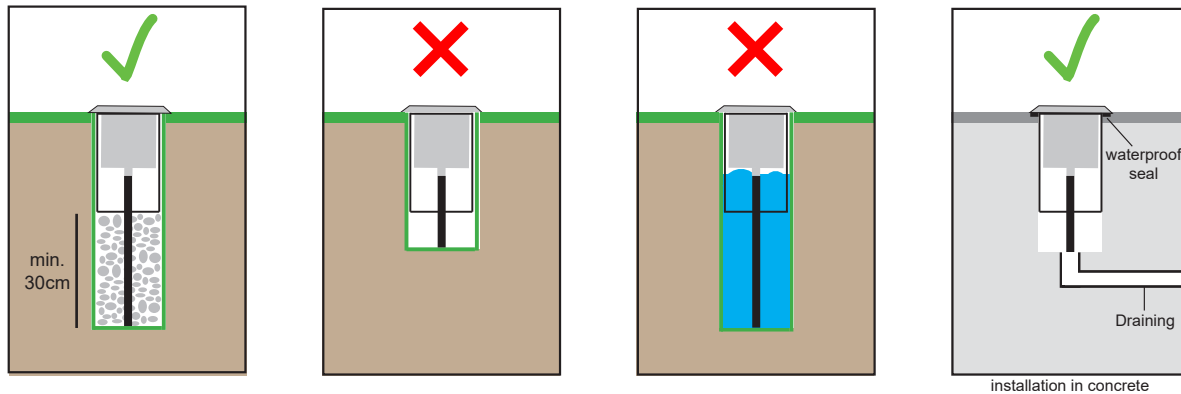
## THE DRAINING

### IP68 luminaires:

Drainage is not necessary, but it is important to know that these fixtures are intended to be permanently immersed only in clear water. They are not designed to be immersed in chlorinated water, seawater or any other aggressive environment.

### IP67 luminaires:

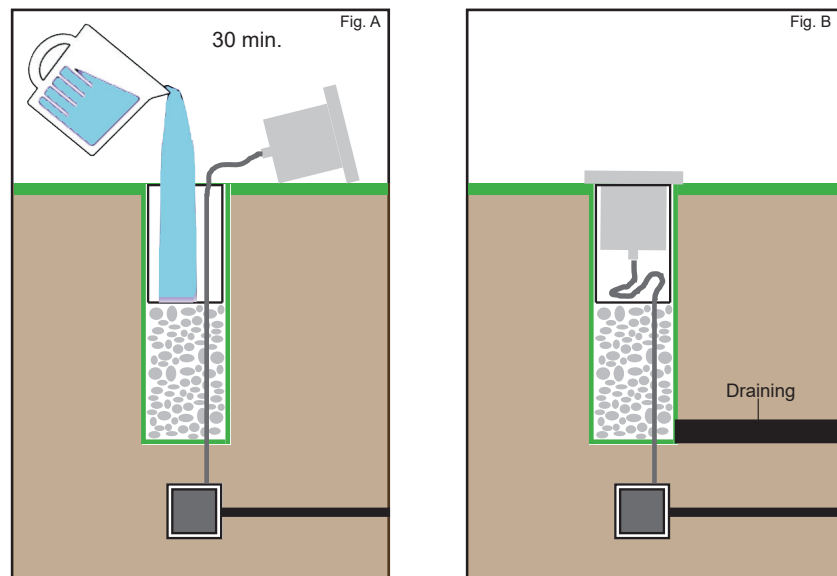
To ensure good drainage, install a layer of gravel with a minimum depth of 30cm under the recessed box.



We recommend to perform the following test:

Fill the recessing box with water (Fig.A) and make sure that it has completely dissolved in 30min.

Otherwise, additional drainage is required (Fig.B)



## IMPORTANT

To ensure a good seal of the IP68 cable gland, it is important to leave a sufficient length and not to «bend» the cable just at the exit of the cable gland.

