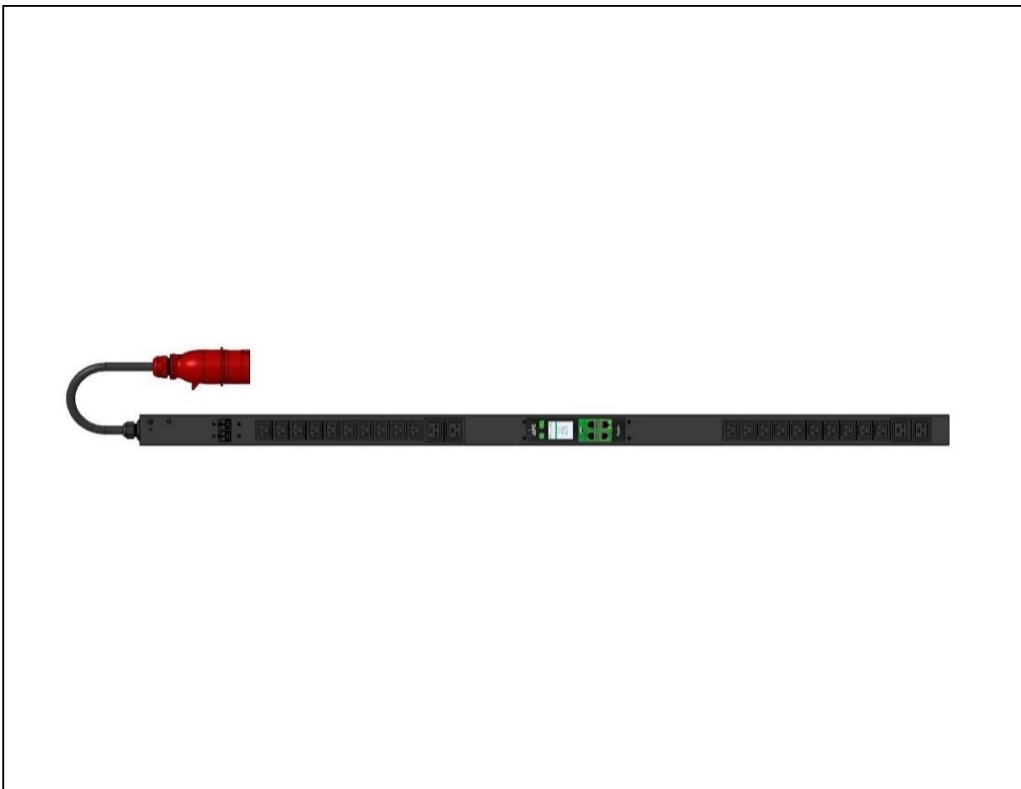


Product End of Life Instructions

Easy PDU



Potential disassembly risks

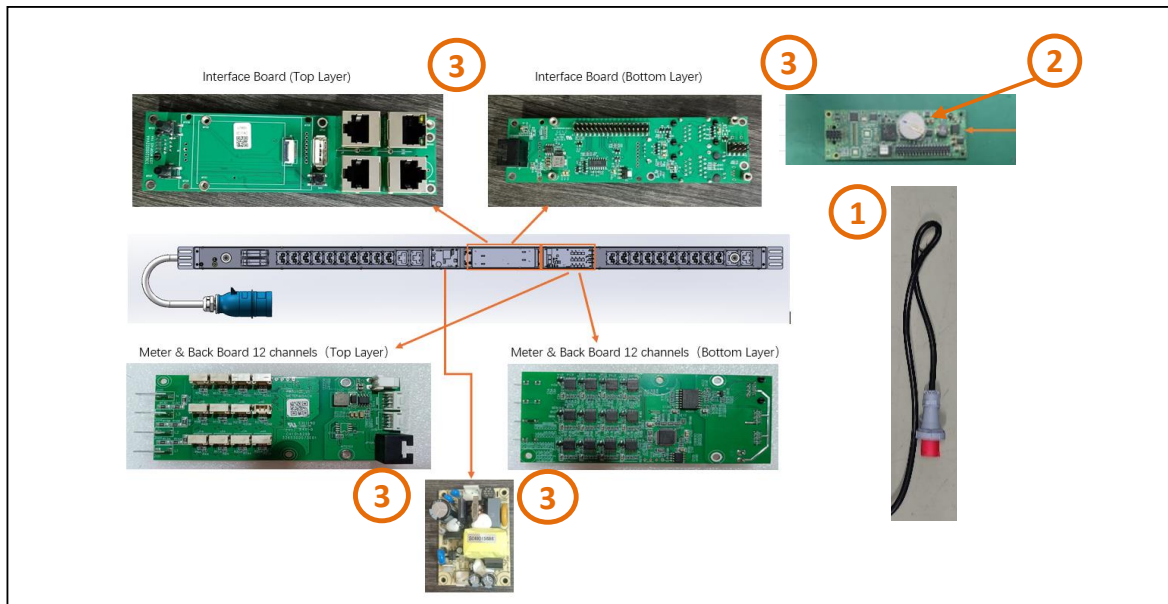
WARNING

HAZARD OF ARC FLASH OR FIRE

- Disconnect battery terminals before disassembly
- Avoid any electrical connection between the terminals

Failure to follow these instructions can result in death or serious injury.

End of Life Instructions



Recommendation	Number on drawing	Component / Material	Weight (in g)	Comment
To be depolluted	1	Cable (high current)	1000	External electric cable
To be depolluted	2	Batteries	3	1 x coin battery
To be depolluted	3	Electronic Board (Communication) > 10cm ²	288	4 x PCBA>10cm ²



Product description

Manufacturer identification	Schneider Electric Industries SAS
Brand name	APC
Product function	Easy PDU provides reliable rack power distribution units that offer more than a power strip for server rack and network rack solutions.
Product reference	EPDU2132M
Additional similar product references	EPDU2016M, EPDU2016S, EPDU2116M, EPDU2216M, EPDU2232M, EPDU2216S, EPDU2232S, EPDU2132S, EPDU2116S, EPDU2232SX3620, EPDU2232SX2423, EPDU2232SX3623
Total representative product mass	3350 g
Representative product dimensions	1650mm x 56mm x 56 mm
Date of information release	2025/7/31



Additional information

Legal information	This product family is in the scope of European Union directive 2012/19/EU on Waste Electrical and Electronic Equipment (WEEE). The product family must be disposed according to the legislation of the country. This document is intended for use by end of life recyclers or treatment facilities. It provides the basic information to assure an appropriate end of life treatment for the components and materials of the product.
Recyclability potential	45% The recyclability rate was calculated from the recycling rates of each material making up the product based on REEECYLAB tool developed by Ecosystem, for components/materials not covered by the tool, data from the EIME database and the related PSR was taken. If no data was found a conservative assumption was used (0% recyclability).

Schneider Electric Industries SAS
Country Customer Care Center
<http://www.se.com/contact>
35, rue Joseph Monier
CS 30323
F- 92500 Rueil Malmaison Cedex
RCS Nanterre 954 503 439
Capital social 928 298 512 €

www.se.com

ENVEOLI2412049_V2

Published by Schneider Electric

© 2023 - Schneider Electric – All rights reserved

07/2025